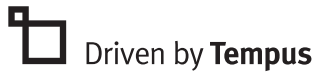


# Stride family



## Unitron TrueFit quick reference fitting guide

This quick reference fitting guide will lead you through a Stride™ hearing instrument fitting using Unitron TrueFit™ fitting software.

Unitron TrueFit software is available as either as a standalone version or as a module within NOAH.

Before detecting the Stride hearing instruments, choose your desired programming interface.

- If iCube II, insert batteries into hearing instruments and close battery door.
- If NOAHlink or HI-PRO with BTE devices, open battery door and insert programming cable into programming port.
- If NOAHlink or HI-PRO with ITE devices, remove the battery door and insert the programming cable.

During programming, the following features are de-activated; automatic program, hearing instrument controls, accessories, easy-t, audio streaming, and adaptive microphone features.

## Entering client information

### Information (standalone version)

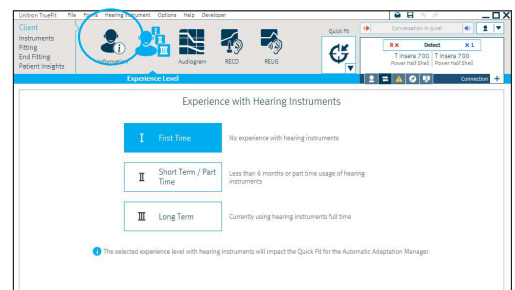
Within [Client](#), click on [Information](#). Click the [New Client](#) button, enter the client's information and click [Save](#). Click the [Blank Session](#) button to begin a new session.

### Experience

Within [Client](#), click on [Experience Level](#) and enter the client's experience with hearing instruments.

### Audiogram (standalone version)

Within [Client](#), click on [Audiogram](#), enter the client's audiogram and select the transducer used for audiometry.



## Detecting hearing instruments

Within [Instruments](#), click on [Selection](#) and choose your desired programming interface from the drop-down list under the Detect button.

Click the [Detect](#) button. The hearing instrument model, style and serial number are displayed, and the communication status is updated.

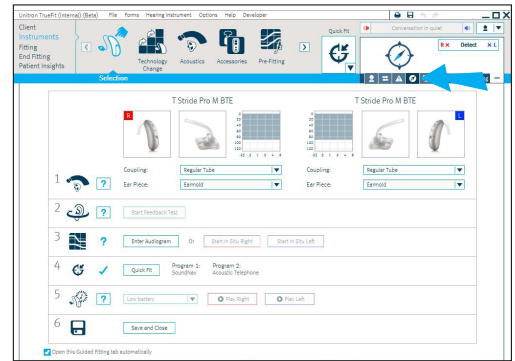
## Guided fitting

This fitting option is automatically available for any hearing instruments without a stored fitting. Guided fitting can also be accessed through the Quick View Pane.

Fittings can be completed by following the steps provided.

Check marks confirm which steps have been completed, while a question mark indicates steps to be completed. Question marks within a box indicate optional steps.

Your hearing instruments have been successfully programmed after all required steps have check marks.



## Traditional fitting option

### Within Instruments menu

#### To select acoustics for a Stride BTE

Within Instruments, click on [Acoustics](#).

- Enter IntelliVent code to automatically configure venting for custom ear pieces (if applicable)
- Select Regular Tube or Slim Tube
- For regular tube fittings, select the Ear Piece type, Vent size, Earhook type and the Tubing type that are appropriate
- For slim tube fittings, select the Ear Piece and Tubing Length that are appropriate

#### To select acoustics for a Stride ITE

Within Instruments, click on [Acoustics](#).

- Configure the vent (if applicable)
- If you have ordered ITEs with IntelliVent, the software will automatically read the code and configure the hearing instruments for optimal venting

## Quick fit hearing instruments

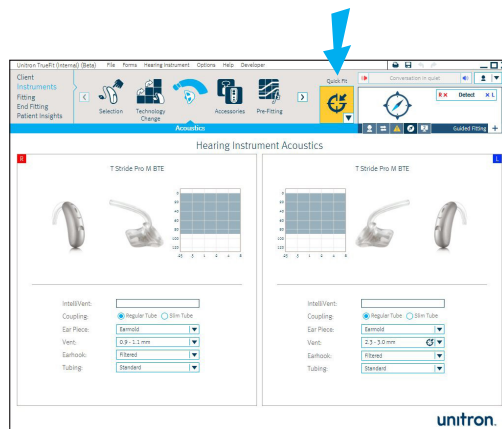
Click the **Quick Fit** button located adjacent to the Quick View Pane.

Changes within software may cause the Quick Fit button to turn yellow. Should this occur, click the Quick Fit button to implement programming changes.

## Pair accessories

Within **Instruments**, click on **Accessories**. You will need a USB cable to connect to the accessories. Click on the icon of the accessory you are pairing to the hearing instruments.

Click the **Activate** button to pair the selected accessory. Follow the on-screen instructions.



## Within Fitting menu

### Feedback optimization

Within **Fitting**, click on **Feedback Optimization**. Click the **Start Feedback Test** button and follow the on-screen instructions.

Note: Use of this test is recommended for the removal of persistent feedback.

### Tuning

Within **Fitting**, click on **Adaptation Manager** to modify the settings. This is the best place to start for coarse gain adjustments. A check box is available to de-activate automatic adaptation if desired.

Click on **Tuning** to further fine tune the hearing instruments.

If necessary, Fitting Advice can be used to suggest and apply fine tuning solutions.

## Within End Fitting menu

### Configure hearing instrument setup

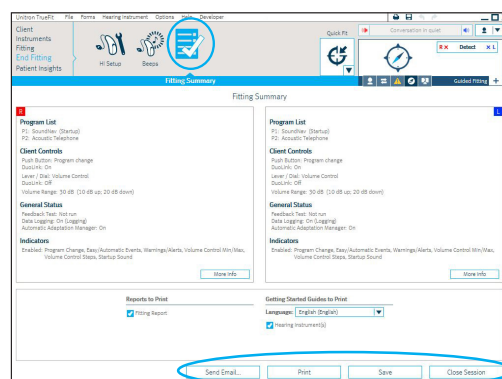
Within **End Fitting**, select **HI Setup** to configure hearing instruments from HI setup defaults.

### Configure beeps

Within **End Fitting**, select **Beeps** to demonstrate and configure beeps from defaults.

### To end the fitting session

Click on **Fitting Summary** and select the **Print**, **Save and Email** buttons. Close the session using the **Close Session** button.



## After closing the fitting session

Patients will be able to experience the full benefit of their technology level only after hearing instruments have been rebooted.

To reboot the hearing instruments after using iCube II, open and close the battery doors.

To reboot the hearing instruments after using NOAHlink or HI-PRO, remove the programming cables, insert batteries and close battery doors.

For more information about fitting Stride family hearing instruments or Unitron TrueFit fitting software, visit the Help feature within Unitron TrueFit.