

Moxi family



Driven by **Tempus**

Unitron TrueFit quick reference fitting guide

This quick reference fitting guide will lead you through a Moxi™ hearing instrument fitting using Unitron TrueFit™ fitting software.

Unitron TrueFit software is available as either as a standalone version or as a module within NOAH.

Before detecting the Moxi hearing instrument(s), choose your desired programming interface.

- If iCube II, insert batteries into hearing instruments and close battery door.
- If NOAHlink / HI-PRO, open battery door and insert programming cable into programming port.

During programming, the following features are de-activated; automatic program, hearing instrument controls, accessories, easy-t, audio streaming, and adaptive microphone features.

Entering client information

Information (standalone version)

Within [Client](#), click on [Information](#). Click the [New Client](#) button, enter the client's information and click [Save](#). Click the [Blank Session](#) button to begin a new session.

Audiogram (standalone version)

Within [Client](#), click on [Audiogram](#), enter the client's audiogram and select the transducer used for audiometry.

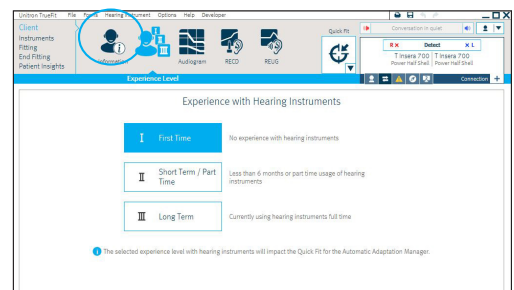
Experience

Within [Client](#), click on [Experience Level](#) and enter the client's experience with hearing instruments.

Detecting hearing instruments

Within [Instruments](#), click on [Selection](#) and choose your desired programming interface from the drop-down list under the detect button.

Click the [Detect](#) button. The hearing instrument model, style and serial number are displayed, and the communication status is updated.



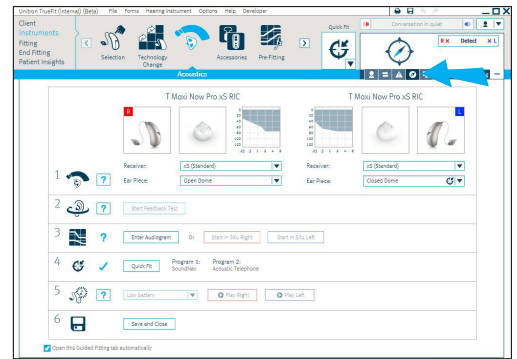
Guided fitting

This fitting option is automatically available for any hearing instruments without a stored fitting. Guided fitting can also be accessed through the Quick View Pane.

Fittings can be completed by following the steps provided.

Check marks confirm which steps have been completed, while a question mark indicates steps to be completed. Check marks within a box indicate step is to be optional.

Your hearing instruments have been successfully programmed after all required steps have check marks.



Traditional fitting option

Within instruments menu

To select acoustics

Within Instruments, click on **Acoustics**.

- Enter IntelliVent code to automatically configure venting for custom ear piece (if applicable)
- Select Receiver Type (i.e. xS, xP)
- Select Ear Piece (i.e. open, closed)
- Select Vent to manually configure venting (If applicable)
- Select Wire Length for record keeping purposes

Quick fit hearing instruments

Click the **Quick Fit** button located adjacent to the Quick View Pane.

Changes within software may cause the Quick Fit button to turn yellow. Should this occur, click the Quick Fit button to implement programming changes.

Pair accessories

Within **Instruments**, click on **Accessories**. You will need a USB cable to connect to any of our accessories. Click on the icon of the accessory you are pairing to the hearing instrument(s).

Click the **Activate** button to pair the selected accessory. Follow the on-screen instructions.



Within fitting menu

Feedback optimization

Within **Fitting**, click on **Feedback Optimization**. Click the **Start feedback test** button and follow the on-screen instructions.

Note: Perform feedback optimization test if audible feedback is present or reported.

Tuning

Within **Fitting**, click on **Tuning** to manually fine tune hearing instruments from default settings.

Click on **Adaptation Manager** to modify from recommended settings. A check box is available to de-activate automatic adaptation if desired.

If necessary, fitting advice can be used to suggest and apply fine tuning solutions.

Within end fitting menu

Configure hearing instrument set-up

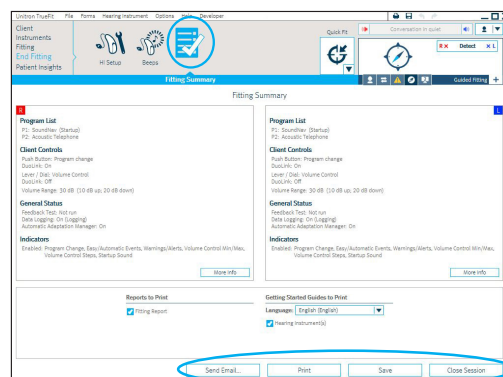
Within **End Fitting**, select **HI Setup** to configure hearing instruments from HI setup defaults.

Configure Beeps

Within **End Fitting**, select **beeps** to demonstrate and configure beeps from defaults.

To End Fitting

To end the fitting, click on **Fitting Summary** and select the **Print, Save and Email** buttons. Close the session using **Close Session** button.



After closing session

Patients will be able to experience the full benefit of their technology level only after hearing instrument has been rebooted.

To reboot hearing instrument after using iCube II, open and close the battery door.

To reboot hearing instrument after using NOAHlink / HI-PRO, remove program cable, insert batteries and close battery door.

For more information about fitting Moxi family hearing instruments or Unitron TrueFit fitting software, visit the Help feature within Unitron TrueFit.