

## Recommended system requirements

System component	Recommendation
Processor	Pentium IV, 2 GHz or faster
RAM	2 GB or more
Hard disk space	2 GB or more
Operating system	<ul style="list-style-type: none"><li>• Windows XP, 32 bit, SP3 &amp; later</li><li>• Windows Vista, 32 bit/64 bit, latest SP</li><li>• Windows 7, 32 bit/64 bit, latest SP</li><li>• Windows 8, 32 bit/64 bit, latest SP</li></ul>
Display resolution	1024 x 1024 pixels
Patient secondary display resolution	1280 x 1024 pixels
Graphic card	16 Million (24 bit) screen colors or more
Drive	DVD-ROM or CD-ROM
Serial COM port	One for HI-PRO if used via serial COM port
USB ports	One for each purpose: <ul style="list-style-type: none"><li>• Bluetooth adaptor</li><li>• Accessory programming</li><li>• HI-PRO USB / HI-PRO 2</li></ul>

System component	Recommendation
Programming interfaces	<ul style="list-style-type: none"><li>• iCube</li><li>• NOAHlink</li><li>• HI-PRO / HI-PRO USB / HI-PRO 2</li></ul>
NOAHlink driver	NOAHlink properties and NOAHlink kernel: latest version available
Internet connection	Highly recommended
Browser	<ul style="list-style-type: none"><li>• Internet Explorer® 7 or newer</li><li>• Mozilla® Firefox® 6 or newer</li><li>• Google® Chrome™ 18 or newer</li></ul>
Sound card	Stereo
Playback system	20 Hz – 14 kHz
NOAH version	NOAH 4.4 (NOAH 3.7.1 or newer required)

# unitron TrueFit™ software

Successful fittings. Simplified.

Unitron TrueFit v2.4  
Installation guide

## Installing Unitron TrueFit software

1. Insert the Unitron Disc 1 into your CD-ROM drive or the Unitron TrueFit DVD into your DVD-ROM drive. The installation program should be launched automatically by your operating system.

If it is not, either:

Go to: Windows Start, choose Run... enter the file information.  
(i.e. d:\setup.exe, where d: represents the letter of your CD/DVD-ROM drive) and click on **OK**.

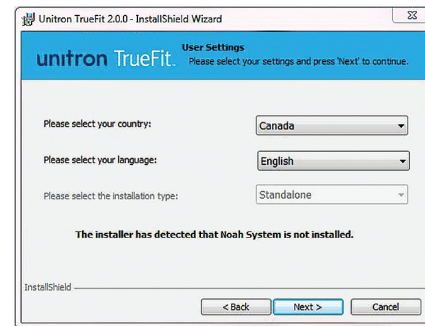
OR

Using Windows Explorer (My Computer), locate the file **setup.exe** on your CD/DVD-ROM drive and double-click the file name.



2. Select the preferred installation language: English, French, German or Dutch (for the installation procedure only).



3. When the Unitron TrueFit installation window appears, follow the instructions on the screen, such as selecting the preferred installation type: NOAH or Standalone.



Note: you may be prompted to insert the Unitron Disc 2 during the installation process if you have requested media files or support materials.

-  Instructions are available at [www.unitron.com/instr](http://www.unitron.com/instr) in Adobe® Acrobat® PDF format. To view them, you must have **Adobe Acrobat Reader** installed. Visit [Adobe.com](http://Adobe.com) to download.
-  To obtain a free paper copy of the instructions, please contact Unitron using the phone numbers or address in this guide. A copy will be sent within 7 days.

## Need assistance?

Australia - 1800 212 313  
Austria - +49 711 658538 0  
Belgium - +32 (0) 2 468 19 81  
Canada - 1 800 265 8255  
China - +86 21 61205533  
Colombia - +57 1 2149045  
Denmark - +45 64 41 78 87  
France - 0821 02 9000  
Germany & European  
Representative - +49 711 658538 0  
India - +91-22-26871151

Netherlands - +31 88 600 88 10  
New Zealand - 0800 864 8766  
Norway - +47 22 47 76 30  
Russia - +7 495 788 02 04  
South Africa - (011) 467 7662/52  
South Korea - +82 2 859 4902  
Spain - +34 902 494 960  
Sweden - +46 (0) 8 546 20 960  
Switzerland - 0800 928 801  
U.K. - +44 (0) 1925 247810  
U.S. - 1 800 888 8882

For countries not listed - +1 519 895 0100



Unitron Hearing  
20 Beasley Drive, P.O. Box 9017,  
Kitchener, ON N2G 4X1 Canada

