

uDirect™ Bluetooth® Pairing Guides

Samsung®

Pairing and connecting uDirect™ with your Samsung®** cellular phone

Charge and turn on both your cellular phone and uDirect™. Place them next to one another.

Turning on Samsung Bluetooth®

1. Find the connectivity settings of your phone.
With most Samsung models one of the following navigation options applies:

Menu > Settings > Connectivity tab >
Bluetooth > My devices, or

Menu > Applications > Bluetooth > My devices

Setting uDirect™ into pairing mode

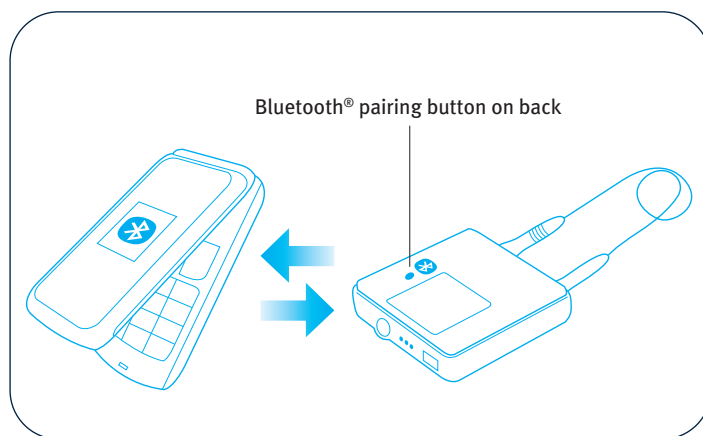
To initiate the pairing process on uDirect™, set uDirect into pairing mode by pressing and holding the Bluetooth pairing button for about two seconds until the Bluetooth LED indicator is blue and flashing quickly. uDirect is now in pairing mode for two minutes or until the pairing is complete.

Pairing uDirect™ with your cellular phone

1. While in the Bluetooth menu, select **Search new device**

Note: If you have not activated the Bluetooth functionality, you may be asked if you wish to turn on Bluetooth. This will start the search process for Bluetooth devices.

2. Under the list of available devices, select uDirect and enter 0000 (four zeros) when asked for the passcode or passkey. Allow devices to complete the pairing process. On the cellular phone, uDirect is shown as a paired device and on uDirect, the Bluetooth LED indicator flashes slowly, indicating that the devices are successfully paired.



Connecting uDirect™ with your cellular phone

In addition to being paired, which is done only once, your uDirect and cellular phone need to be connected.

1. To connect manually, in the **My devices** menu, select uDirect and
2. Select **Options > Connect**

On some phones you can configure automatic connection in the access settings of the device details. This allows uDirect to connect automatically without confirmation.

3. If prompted to allow automatic reconnection, do so. This way uDirect and your cellular phone will reconnect whenever within range.

If you have difficulties navigating to the Bluetooth settings, consult your cellular phone User Guide or ask your cellular phone dealer.

* Bluetooth® trademarks are owned by Bluetooth SIG, Inc.

** Samsung is a registered trademark of Samsung Electronics Corp. Ltd.