

## uDirect 2 Bluetooth pairing guide

# Samsung

## Pairing and connecting uDirect 2 with your Samsung cellular phone

Charge and turn on both your cellular phone and uDirect™ 2. Place them next to one another.

### Turning on Samsung® Bluetooth®

1. Find the connectivity settings of your phone.  
With most Samsung models one of the following navigation options applies:  
**Menu > Settings > Connectivity tab > Bluetooth > My devices**, or  
**Menu > Applications > Bluetooth > My devices** or  
**Applications > Settings > Wireless + Network > Bluetooth**

### Setting uDirect 2 into pairing mode

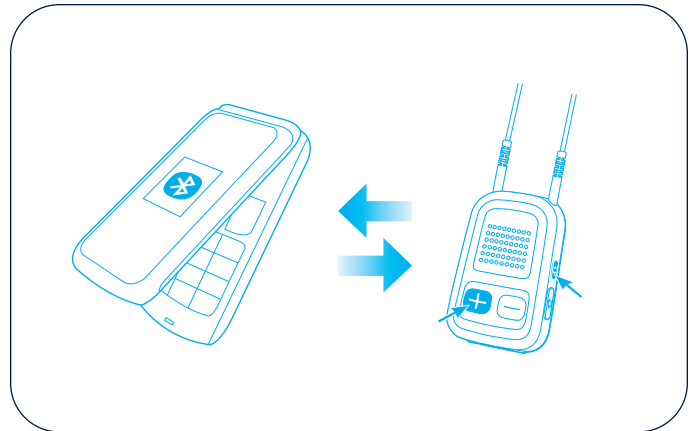
To initiate the pairing process on uDirect 2, set uDirect 2 into pairing mode by pressing and holding the (+) and (<>) buttons for about two seconds until the Bluetooth LED indicator is blue and flashing quickly. uDirect 2 is now in pairing mode for two minutes or until the pairing is complete.

### Pairing uDirect 2 with your cellular phone

1. While in the Bluetooth menu, select **Search new device**

*Note: If you have not activated the Bluetooth functionality, you may be asked if you wish to turn on Bluetooth. This will start the search process for Bluetooth devices.*

2. Under the list of available devices, select uDirect 2 and enter **0000** (four zeros) when asked for the passcode or passkey. Allow devices to complete the pairing process. On the cellular phone, uDirect 2 is shown as a paired device and on uDirect 2, the Bluetooth LED indicator flashes slowly, indicating that the devices are successfully paired.



### Connecting uDirect 2 with your cellular phone

In addition to being paired, which is done only once, your uDirect 2 and cellular phone need to be connected.

1. To connect manually, in the **My devices** or **device** menu, select **uDirect 2** and
2. Select **Options > Connect**

On some phones you can configure automatic connection in the access settings of the device details. This allows uDirect 2 to connect automatically without confirmation.

3. If prompted to allow automatic reconnection, do so. This way uDirect 2 and your cellular phone will reconnect whenever within range.

If you have difficulties navigating to the Bluetooth settings, consult your cellular phone user guide or ask your cellular phone dealer.