

uDirect 2 Bluetooth pairing guide

Nokia

Pairing and connecting uDirect 2 with your Nokia cellular phone

Charge and turn on both cellular phone and uDirect™ 2. Place them next to one another.

Turning on Nokia® Bluetooth®

Find the connectivity settings of your phone.

With most Nokia models the following navigation applies:

Menu > Settings > Connectivity > Bluetooth

Note: Bluetooth is enabled when the setting displays ON.

Setting uDirect 2 into pairing mode

To initiate the pairing process on uDirect 2, set uDirect 2 into pairing mode by pressing and holding the (+) and (<>) buttons for about two seconds until the Bluetooth LED indicator is blue and flashing quickly. uDirect 2 is now in pairing mode for two minutes or until the pairing is complete.

To pair uDirect 2 with your cellular phone

1. While in the Bluetooth menu, select one of the following options. Depending on the model, pairing selection may be:

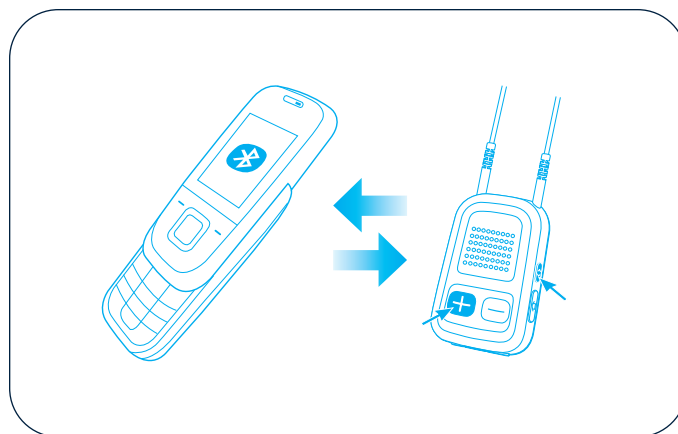
Search for audio enhancement, or

Press right to switch to the **Paired devices** tab.

Select **Options > New paired device**

The phone will start searching for Bluetooth enabled devices within range.

Note: If you have not activated the Bluetooth functionality, you may be asked if you wish to turn on Bluetooth. This will start the search process for Bluetooth devices. Your cellular phone should present a list of Bluetooth devices discovered.



2. Under the list of available devices, select **uDirect 2** and enter **0000** (four zeros) when asked for the passcode or passkey. Allow devices to complete the pairing process. On the cellular phone, uDirect 2 is shown as a paired device and on uDirect 2, the Bluetooth LED indicator flashes slowly, indicating that the devices are successfully paired.

Connecting uDirect 2 with your cellular phone

1. In addition to being paired, which is done only once, your uDirect 2 and cellular phone need to be connected. While in the **Paired devices** menu, select **uDirect 2** on your cellular phone.
2. Select **Connect** or **Connect to audio device**. On some phones you can configure automatic connection within the access settings of the device details.
3. If prompted to **allow automatic reconnection**, do so. This way uDirect 2 and your cellular phone will reconnect whenever within range.

If you have difficulties navigating to the Bluetooth settings, consult your cellular phone user guide or ask your cellular phone dealer.