

uDirect 2 Bluetooth pairing guide

Motorola

Pairing and connecting uDirect 2 with your Motorola cellular phone

Charge and turn ON both your cellular phone and uDirect™ 2. Place them next to one another.

Turning on Motorola® Bluetooth®

1. Find the connectivity settings of your phone. With most Motorola models, one of the following navigation options applies:

Menu > Connection > Bluetooth link, or

Menu > Bluetooth link > Paired Devices > Option, or

Settings > Connection > Bluetooth Link > Hands-free, or

Control Panel > Connections tab > Bluetooth > Devices tab or

Menu > Settings > Wireless + Networks > Bluetooth settings

Note: Bluetooth is enabled when the setting displays ON.

Setting uDirect 2 into pairing mode

To initiate the pairing process on uDirect 2, set uDirect 2 into pairing mode by pressing and holding the (+) and (<>) buttons for about two seconds until the Bluetooth LED indicator is blue and flashing quickly. uDirect 2 is now in pairing mode for two minutes or until the pairing is complete.

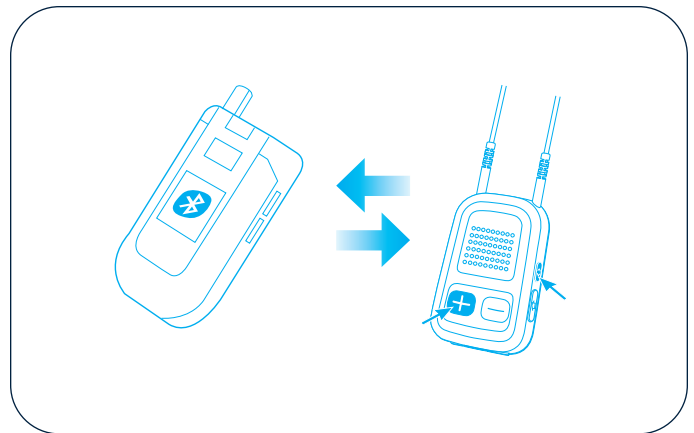
Pairing uDirect 2 with your cellular phone

1. While in the Bluetooth menu, select one of the following options. Depending on the model, pairing selection may be:

Add Audio Device, New Paired Device, Look for Devices, Add or Scan.

The phone will start searching for Bluetooth-enabled devices within range.

Note: If you have not activated the Bluetooth functionality, you may be asked if you wish to turn on Bluetooth. This will start the search process for Bluetooth devices.



2. Under the list of available devices, select **uDirect 2**. Some phone models will **Bond with uDirect 2**. If you are prompted to Bond with uDirect 2, confirm with **YES**. When asked for the passcode or passkey, enter **0000** (four zeros). uDirect 2 will be added to the Bluetooth devices list. Allow devices to complete the pairing process. On the cellular phone, uDirect 2 is shown as a paired device and on uDirect 2, the Bluetooth LED indicator flashes slowly, indicating that the devices are successfully paired. For Android phones, under Bluetooth settings, scan for devices and tap uDirect 2 to connect.

Connecting uDirect 2 with your cellular phone

In addition to being paired, which is done only once, your uDirect 2 and cellular phone need to be connected. On some phones you can configure automatic connection in the access settings of the device details. This allows uDirect 2 to connect automatically without confirmation. If prompted to allow automatic reconnection, do so. This way uDirect 2 and your cellular phone will reconnect whenever within range.

If you have difficulties navigating to the Bluetooth settings, consult your cellular phone user guide or ask your cellular phone dealer.