

Quantum family

Unitron TrueFit quick reference fitting guide

Powered by Era™, Quantum™ and Quantum² products provide clear speech understanding, even in the most challenging listening environments. With intuitive automatic performance and beautiful sound quality, these hearing instruments provide clients more natural listening. Everywhere.

Programming Quantum and Quantum² in Unitron TrueFit software

This quick reference guide will lead you through the steps of a simplified fitting for Quantum and Quantum² hearing instruments using Unitron TrueFit™ fitting software.

To detect the hearing instrument(s), choose your desired programming interface.

- If using iCube, insert the batteries into the hearing instruments and close the battery door.
- If using NOAHlink or HI-PRO with BTE devices, open the battery door and insert the programming cable into the programming port.
- If using NOAHlink or HI-PRO with ITE devices, remove the battery door and insert the programming cable.

Note: For the Quantum and Quantum² micro CIC or the Quantum² 10A ITEs, ensure you are using the white programming cable to avoid damaging the hearing instrument.

Note: Hearing instrument controls, accessories, easy-t, easy-DAI, audio streaming and automatic microphone options are deactivated during programming.

1. Client

NOAH

Within **Client**, click on **Experience Level** and enter the client's experience level with hearing instruments.

Standalone

a. Information

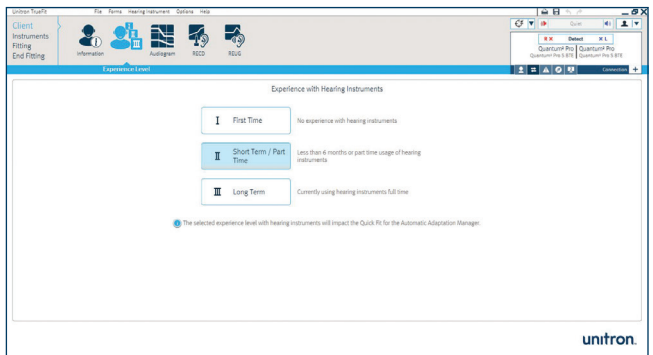
Within **Client**, click on **Information**. Click the **New Client** button, enter the client's information and click **Save**. Click the **Blank Session** button to begin a new session.

b. Experience Level

Within **Client**, click on **Experience Level**, enter the client's experience level with hearing instruments.

c. Audiogram

Within **Client**, click on **Audiogram**, enter the client's audiogram and select the transducer used for audiometry.




2. Instruments

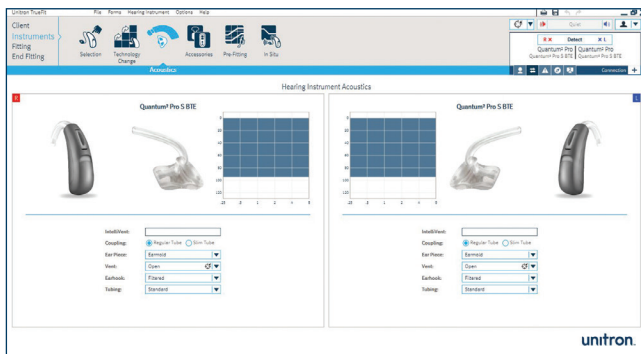
a. Selection

1. Within **Instruments**, click on **Selection** and choose your desired programming interface from the drop-down list under the detect button.
2. Click the **Detect** button. The hearing instrument model, style, matrix and serial number are displayed, and the communication status is updated.



b. Acoustics

1. Within **Instruments**, click on **Acoustics** to configure items such as: coupling, venting, earhook, tubing, and earpiece.
2. For BTEs, if you have ordered an earmold/earpiece with IntelliVent, enter the code and the software will automatically configure the hearing instrument for optimal venting.
3. For BTEs, you can select Regular Tube or Slim Tube.
4. For BTEs with Slim Tube, select the earpiece type and tubing length (optional).
5. For BTEs with regular tubing and an earhook, select the vent size, earhook type and tubing type.
6. For ITEs, you can configure the vent. If you have ordered ITEs with IntelliVent, the software will automatically read the code and configure the hearing instruments for optimal venting.
7. Click the **Quick Fit** button. 



c. Accessories

1. Within **Instruments**, click on **Accessories**.
2. Click on the icon of the accessory you are pairing to the hearing instrument(s).
3. Click the **Activate** button to pair the selected accessory. Follow the on-screen instructions.



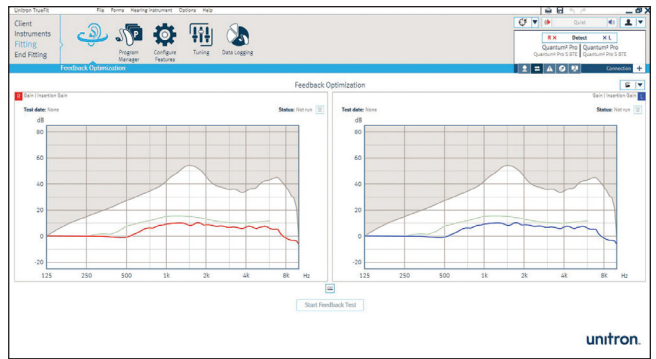
3. Fitting

a. Feedback optimization

1. Within **Fitting**, click on **Feedback Optimization**.
2. Click the **Start feedback test** button and follow the on-screen instructions to perform feedback optimization for each hearing instrument.

b. Tuning

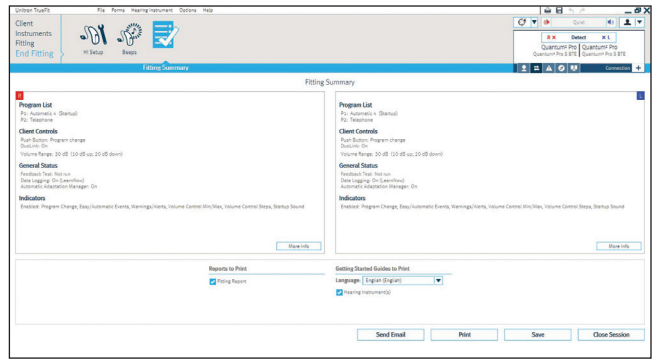
1. Within **Fitting**, click on **Tuning** to manually fine tune the listening programs. If desired, configure the adaptation manager, occlusion manager, Soft/Mod/Loud controls and MPO/Gain/CR controls. Fitting Advice can also be used to suggest and apply fine tuning solutions.
2. Click **Soft/Mod/Loud Controls**. From the program selector list, choose the desired program(s) to adjust. Select the desired input level (soft, moderate, loud or all) and frequency region for adjustment. Increase or decrease settings using the +/- buttons.
3. Click **MPO/Gain/CR**. From the program selector list, choose the desired program(s) to adjust. Select the desired adjustment (MPO, Gain or CR) and frequency region for adjustment. Increase or decrease settings using the +/- buttons.



4. End fitting

Within **End Fitting**, you can configure beep notifications, volume control settings, push button and lever/dial configuration, along with other hearing instrument options.

1. To end the fitting, click on **Fitting Summary** and select the **Print** and **Save** buttons.
2. To close the session, click on the **Close Session** button.
3. After closing the session:
 - If using iCube, restart your hearing instrument(s) by opening and closing the battery door(s).
 - If using NOAHlink or HI-PRO, remove the program cable, insert the batteries and close the battery door.



For more information about fitting Quantum family hearing instruments or Unitron TrueFit fitting software, visit the **Help** feature within Unitron TrueFit.