

Moxi family

Unitron TrueFit quick reference fitting guide

Powered by Era™, every Moxi™ and Moxi² hearing instrument is an RIC (Receiver-in-Canal) packed with technologies that deliver effortless listening in any situation.

Programming the Moxi and Moxi² in Unitron TrueFit software

This quick reference guide will lead you through the steps of a simplified fitting for the Moxi and Moxi² hearing instruments using Unitron TrueFit™ fitting software.

To detect the hearing instrument(s), choose your desired programming interface.

- If using iCube, insert the batteries into the hearing instruments and close the battery door.
- If using NOAHlink or HI-PRO, open the battery door and insert the programming cable into the hearing instrument's programming port.

Note: If desired, the cable tool can be used with the hearing instrument to assist with insertion of the programming cable.

Note: Hearing instrument controls, accessories, easy-t, audio streaming and automatic microphone options are deactivated during programming.

1. Client

NOAH

Within **Client**, click on **Experience Level** and enter the client's experience level with hearing instruments.

Standalone

a. Information

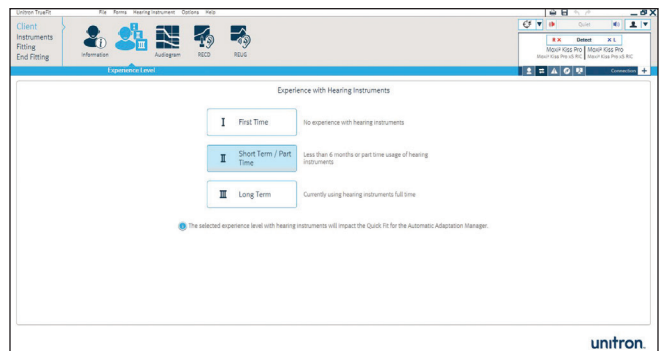
Within **Client**, click on **Information**. Click the **New Client** button, enter the client's information and click **Save**. Click the **Blank Session** button to begin a new session.

b. Experience Level

Within **Client**, click on **Experience Level**, enter the client's experience level with hearing instruments.

c. Audiogram

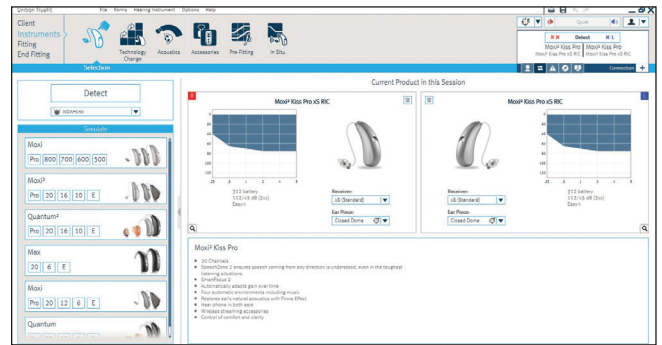
Within **Client**, click on **Audiogram**, enter the client's audiogram and select the transducer used for audiometry.




2. Instruments

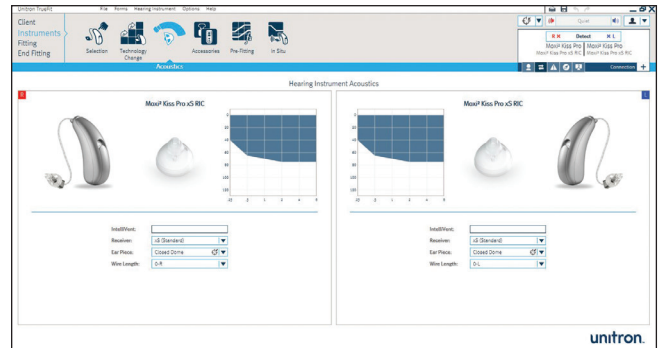
a. Selection

1. Within **Instruments**, click on **Selection** and choose your desired programming interface from the drop-down list under the detect button.
2. Click the **Detect** button. The hearing instrument model, style, matrix and serial number are displayed, and the communication status is updated.



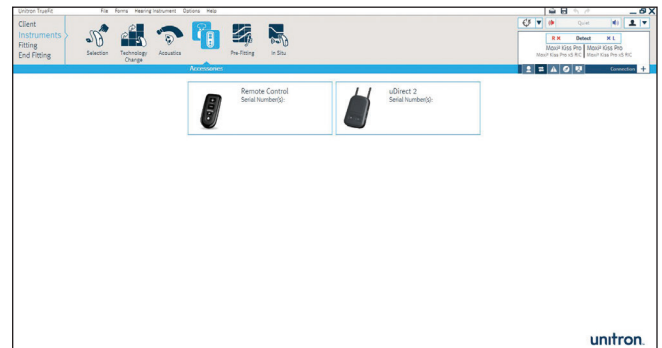
b. Acoustics

1. Within **Instruments**, click on **Acoustics**.
2. Configure the receiver type (xS, xP, xSP or xSP plus), ear piece and vent characteristics (if applicable) from the drop down lists for each hearing instrument. If desired, specify the wire length for record keeping purposes.
3. For custom earpieces with IntelliVent, enter the code and the software will automatically configure the hearing instrument for optimal venting.
4. Click the **Quick Fit** button. 



c. Accessories

1. Within **Instruments**, click on **Accessories**.
2. Click on the icon of the accessory you are pairing to the hearing instrument(s).
3. Click the **Activate** button to pair the selected accessory. Follow the on-screen instructions.



3. Fitting

a. Feedback optimization

1. Within **Fitting**, click on **Feedback Optimization**.
2. Click the **Start feedback test** button and follow the on-screen instructions to perform feedback optimization for each hearing instrument.

b. Tuning

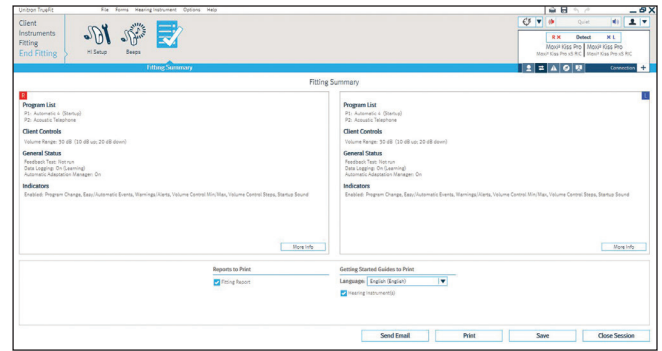
1. Within **Fitting**, click on **Tuning** to manually fine tune listening programs. If desired, configure the adaptation manager, occlusion manager, Soft/Mod/Loud Controls and MPO/Gain/CR Controls. Fitting Advice can also be used to suggest and apply fine tuning solutions.
2. Click **Soft/Mod/Loud Controls**. From the program selector list, choose the desired program(s) to adjust. Select the desired input level (soft, moderate, loud or all) and frequency region for adjustment. Increase or decrease settings using the +/- buttons.
3. Click **MPO/Gain/CR**. From the program selector list, choose the desired program(s) to adjust. Select the desired adjustment (MPO, Gain or CR) and frequency region for adjustment. Increase or decrease settings using the +/- buttons.



4. End fitting

Within **End Fitting**, you can configure beep notifications, volume control settings and startup settings, along with other hearing instrument options.

1. To end the fitting, click on **Fitting Summary** and select the **Print** and **Save** buttons.
2. To close the session, click on the **Close Session** button.
3. After closing the session:
 - If using iCube, restart your hearing instrument(s) by opening and closing the battery door(s).
 - If using NOAHlink or HI-PRO, remove the program cable, insert the batteries and close the battery door.



For more information about fitting Moxi family hearing instruments or Unitron TrueFit fitting software, visit the **Help** feature within Unitron TrueFit.