

Max

Unitron TrueFit quick reference fitting guide

Max™ offers max power and max protection. Max is the only Super Power on the market with Power Adaptation Manager to provide the first fit that clients expect, gently and automatically transitioning them to safer gain levels that will protect their hearing in the end. Powered by Era™, Max offers features that are optimized for severe to profound hearing loss and focused on maximizing intelligibility without compromising awareness. Fight over-amplification and provide the best possible long term hearing outcomes with Max.

Programming Max in Unitron TrueFit software

This quick reference guide will lead you through the steps of a simplified fitting for Max hearing instruments using Unitron's TrueFit™ fitting software.

To detect the hearing instrument(s), choose your desired programming interface.

- If using iCube, insert the batteries into the hearing instruments and close the battery door.
- If using NOAHlink or HI-PRO, lift the programming port cover and insert the programming cable into the programming port.

Note: Hearing instrument controls, accessories, easy-t, easy-DAI, audio streaming and automatic microphone options are deactivated during programming.

1. Client

NOAH

Within **Client**, click on **Experience Level** and enter the client's experience level with hearing instruments.

Standalone

a. Information

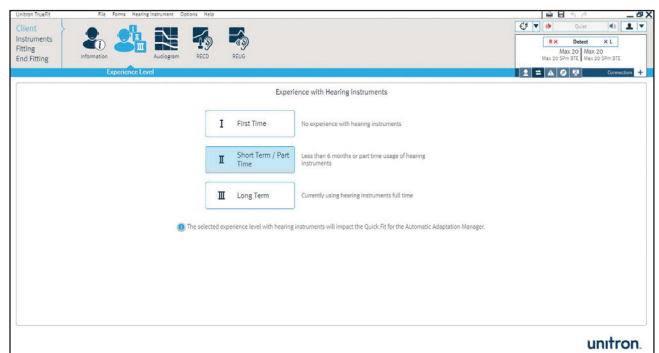
Within **Client**, click on **Information**. Click the **New Client** button, enter the client's information and click **Save**. Click the **Blank Session** button to begin a new session.

b. Experience Level

Within **Client**, click on **Experience Level**, enter the client's experience level with hearing instruments.

c. Audiogram

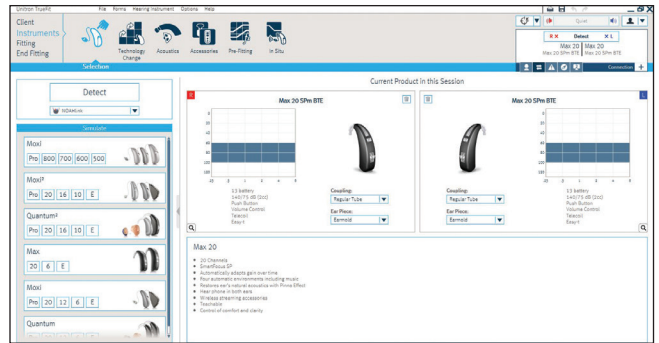
Within **Client**, click on **Audiogram**, enter the client's audiogram and select the transducer used for audiometry.




2. Instruments

a. Selection

1. Within **Instruments**, click on **Selection** and choose your desired programming interface from the drop-down list under the detect button.
2. Click the **Detect** button. The hearing instrument model, style, matrix and serial number are displayed, and the communication status is updated.



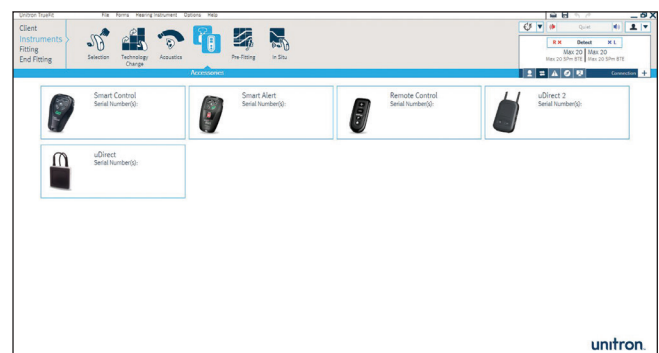
b. Acoustics

1. Within **Instruments**, click on **Acoustics** to configure items such as: coupling, venting, earhook, tubing, ear piece and tubing length.
2. If you have ordered an earmold/ear piece with IntelliVent, enter the code and the software will automatically configure the hearing instrument for optimal venting.
3. You can select Regular Tube or Power Slim Tube.
4. For Power Slim Tube, select the ear piece type, vent and tubing length.
5. For regular tubing and an earhook, select the vent size, earhook type and tubing type.
6. Click the **Quick Fit** button. 



c. Accessories

1. Within **Instruments**, click on **Accessories**.
2. Click on the icon of the accessory you are pairing to the hearing instrument(s).
3. Click the **Activate** button to pair the selected accessory. Follow the on-screen instructions.



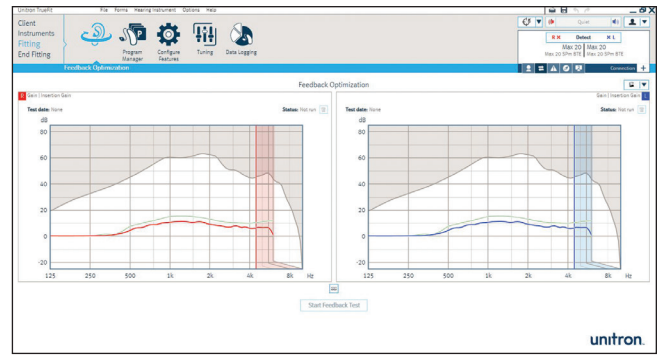
3. Fitting

a. Feedback optimization

1. Within **Fitting**, click on **Feedback Optimization**.
2. Click the **Start feedback test** button and follow the on-screen instructions to perform feedback optimization for each hearing instrument.

b. Tuning

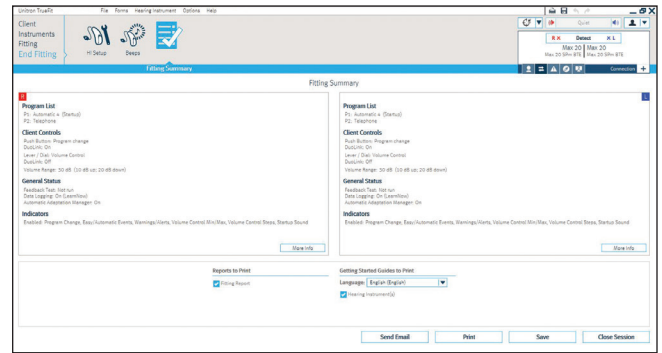
1. Within **Fitting**, click on **Tuning** to manually fine tune the listening programs. If desired, configure the Adaptation Manager, Occlusion Manager, Bass Enhancer, Soft/Mod/Loud controls, MPO/Gain/CR/TK controls and Frequency Compression. Fitting Advice can also be used to suggest and apply fine tuning solutions.
2. Click **Soft/Mod/Loud Controls**. From the program selector list, choose the desired program(s) to adjust. Select the desired input level (soft, moderate, loud or all) and frequency region for adjustment. Increase or decrease settings using the +/- buttons.
3. Click **MPO/Gain/CR/TK**. From the program selector list, choose the desired program(s) to adjust. Select the desired adjustment (MPO, Gain, CR or TK) and frequency region for adjustment. Increase or decrease settings using the +/- buttons.



4. End fitting

Within **End Fitting**, you can configure volume control settings, push button and lever configurations and beep notifications along with other hearing instrument options.

1. To end the fitting, click on **Fitting Summary** and select the **Print** and **Save** buttons.
2. To close the session, click on the **Close Session** button.
3. After closing the session:
 - If using iCube, restart your hearing instrument(s) by opening and closing the battery door(s).
 - If using NOAHlink or HI-PRO, remove the program cable, insert the batteries and close the battery door.



For more information about fitting Max hearing instruments or Unitron TrueFit fitting software, visit the **Help** feature within Unitron TrueFit.