

unitron TrueFit[™] software

instruction guide

Version 3.7

Version 3.7 supports the following product families;

Era Platform: Quantum, Quantum², Moxi, Moxi², Max, Shine Rev

North platform: Moxi, Stride

Tempus platform: Moxi, Stride, Insera, Max

Table of contents

NOAH and standalone versions	3	Pre-Fitting	18
Programming information.....	3	Super Power pre-sets (if applicable)	18
iCube /iCube II.....	3	Fitting Formula.....	18
NOAHlink / HI-PRO	3	Processing Strategy	18
Noahlink Wireless.....	4	Tinnitus Masker Strategy	18
Tool bar icons	4	Frequency Compression Strategy	19
Quick View Pane	5	In Situ	19
Client tab	5	Fitting menu	20
Connection tab	5	Feedback Optimization	20
Alerts tab	5	Program Manager	21
Guided fitting tab	6	Configure Features	22
Patient view tab	6	Phase Canceller	22
Located beside Quick View pane area	6	AntiShock 2.....	22
myUnitron account	6	SmartFocus / SmartFocus SP / SmartFocus 2	22
Recalculate	6	Sound Conductor	22
Mute / unmute	7	Wind Noise Manager / Wind Control.....	22
Fitting Mode.....	7	Input	22
Client menu	7	Automatic Controls	23
Information	7	Binaural Phone	23
Experience Level	8	Car with Speech Direction	23
Audiogram	8	MyMusic	24
RECD.....	10	Tuning.....	24
REUG	10	Adaptation Manager	24
Importing RECD or REUG from NOAH	10	Occlusion Manager	25
Instruments menu	11	Bass Enhancer	26
Selection	11	Soft / Mod / Loud Controls	26
Technology Change.....	12	MPO / Gain / CR Controls	26
Acoustics.....	13	Frequency Compression	27
BTE and RIC instruments	13	Frequency Compression 2	28
Custom instruments	13	Fitting Advice	29
Accessories.....	14	Tinnitus Masker	29
Remote Control / Remote Control 2	14	End Fitting menu	31
uDirect 2 / uDirect 3	14	HI Setup.....	31
uStream	16	Push Button	31
uControl app	17	Lever / dial	32
Remote Plus app	18	IIC / Micro CIC remote.....	32
Patient Ratings	18	Bluetooth & Streaming:	33
		Volume Settings	33
		Start up Settings.....	33
		Data logging	33
		Program Toggle Exceptions.....	33

Beeps	33
Beep Setup	34
Beep Enabling.....	34
Trial Duration	35
Patient Insights Setup	35
Patient Language.....	35
Overall satisfaction emails	35
Fitting Summary	35
Patient insights menu	36
Overview	36
Usage (Data logging)	37
Lifestyle (Log It All).....	37
Patient Ratings	38
Curve display options	39
Main Menu	40
File	40
Forms	40
Hearing Instrument.....	41
Options.....	41
Preferences	41
General	41
Fitting Session	42
Reports	42
Fitting Device	42
Sound System.....	43
Help	43
Help & Support.....	43
Instruction Guide	43
Training Session	43
Contact Us	44
Unitron Website.....	44
Support	44
About DSL v5	44
About Unitron TrueFit	44

NOAH and standalone versions

Unitron TrueFit fitting software is available both as a NOAH module and as standalone software. The only difference with these versions is the client information storage. For the NOAH version, the fitting software relies on NOAH's database to save client specific information including audiogram. The standalone version does not use NOAH and contains its own client database.

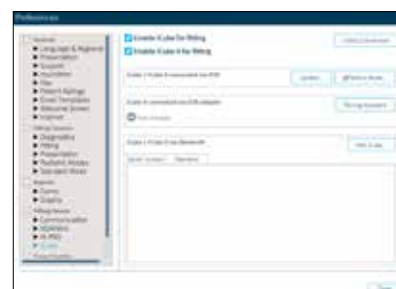
Programming information

Prior to detecting the hearing instrument(s), choose your desired programming interface.

Note: During programming hearing instrument controls, automatic program, accessories, easy-t, easy-DAI, audio streaming, **Bluetooth®** connectivity, and automatic microphone options are deactivated.

iCube /iCube II

- The original iCube will not detect hearing instruments on the North or Tempus platforms
- If using iCube/ iCube II for the first time, you will need to configure the fitting device. From the top menu select [Options > iCube Configuration](#) and follow the on-screen instructions. If you have installed the Support Materials, then you can view an instructional video on how to configure the iCube / iCube II under [Help > Help & Support > Tutorials](#)
- If using iCube/iCube II, insert batteries into the hearing instruments and close the battery door. Place hearing instruments on your client's ears and place the iCube/iCube II around your client's neck or place the hearing instruments inside the iCube/iCube II neck loop.



NOAHlink / HI-PRO

- If using NOAHlink or HI-PRO with BTE or RIC hearing instruments, open the battery door and insert the programming cable into the programming port. Connect the other end of the cable to the NOAHlink or HI-PRO.
- If using NOAHlink or HI-PRO with ITE hearing instruments, remove the battery door and insert the programming cable. Connect the other end of the cable to the NOAHlink or HI-PRO.

Note: BTE and RIC hearing instruments are initially fit to a 40 dB HL flat hearing loss configured for the left ear upon shipping. ITE hearing instruments are fit to the client's audiogram if supplied; otherwise, the devices are using a 40 dB HL flat hearing loss.

Note: For Quantum or Quantum² micro CIC products or Quantum² 10A or Stride 10A custom products, ensure you are using the white programming cable to avoid damaging the hearing instrument.

Note: Shine Rev hearing instruments are non-wireless and can be programmed with NOAHlink or HI-PRO.

Noahlink Wireless

- If using Noahlink Wireless, insert batteries into the hearing instruments and close the battery doors.
- If using Noahlink Wireless to connect to hearing instruments that are not saved in the current session, the hearing instruments must be in pairing mode. To put the hearing instruments into pairing mode, open and then close the battery doors of the instruments. Pairing mode lasts for 3 minutes.
- If using Noahlink Wireless to connect to hearing instruments that are already saved in the current session, the hearing instruments do not have to be in pairing mode.

Note: Moxi All instruments are wireless and can only be programmed using the Noahlink Wireless

Tool bar icons

There are tool bar icons available at the top right hand corner of each screen.



Print icon: opens a window that shows the documents available such as the Fitting Reports and the Getting Started Guides (hearing instruments and accessories, if applicable). The client's language for the Getting Started Guides can be selected. The selected documents can be previewed, printed or saved from this window.

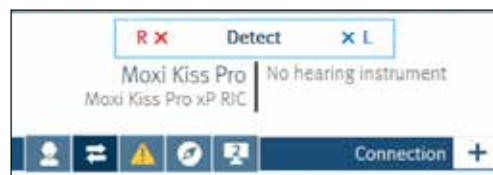
Save icon: saves the current fitting information. Choose from Save to hearing instrument, Save to database, Save to accessories (if accessory added to fitting).

Undo/Redo: removes or repeats an action that was made in the fitting software. Hover over the icon to see which action will be affected by clicking. Undo/Redo is available within some tasks but the list of items to be undone will not carry over across tasks.

Updates available: this icon appears if there are software updates available. Click on this icon to open the Software Updates tab of the Welcome screen.

Quick View Pane

The Quick View Pane is a multi-tab panel, located in the upper right of the Unitron TrueFit screen, that provides useful information on the current status of the hearing instrument fitting. Each tab can be expanded by clicking on the plus sign to view additional details relating to that section. Located above the Quick View Pane are additional fitting tools.



Each tab serves a different purpose:



Client tab

Provides the client's name, number, last audiogram date, hearing instrument type and accessories. Clicking on the plus sign provides access to more information on the hearing instruments, date of birth, and an area for note entry.



Connection tab

Lists current hearing instrument(s) along with the current connection status for each ear. An X icon next to the associated side (R or L) indicates the device is not connected, while a checkmark indicates the device is connected. If the connection is lost at any point, click the Detect bar on the Connection tab to reconnect. Click the plus sign to expand the Connection tab where you can see at a glance information and helpful quick links related to the hearing instruments and the fitting device.

Depending on the fitting and hearing instruments, these items may be presented.

- Data logging
- Log It All
- Patient Ratings
- Automatic Adaptation Manager
- Soft / Mod / Loud controls

The Connection tab will automatically open after detecting hearing aids for a follow-up fitting. If you would prefer not to have the Connection tab open automatically, you can uncheck this option at the bottom of the expanded Connection tab.

Note: HI-PRO refers to the original HI-PRO, USB HI-PRO and HI-PRO 2. The HI-PRO that is actually used is configured using the HI-PRO configuration tool.



Alerts tab

Provides fitting help and alert messages during the fitting. A yellow-highlighted alerts tab appears momentarily to inform you of items that could impact your fitting should an action result in the need to modify the hearing instrument (e.g., recalculation) or affect another software screen (e.g., program removal changes program toggle on remote control). Clicking the plus sign provides a list of all help and alert messages that have occurred during the current fitting. The alert messages are automatically removed after being addressed during the fitting, after closing a session or via the remove icon on the alert tab.



Guided fitting tab

Guides you through a new fitting using a step by step approach. Completion of each step is identified by a checkmark. You can leave this screen to make fine tuning changes elsewhere, and return at a later point to complete remaining steps. Tab will open automatically for hearing instruments without a saved fitting.



Patient view tab

Allows you to display patient oriented screens on a second monitor while using Unitron TrueFit software. The patient screens may change depending on the task being performed by you. For example, screens were created for the feedback test to remind the patient to remain quiet. Using checkboxes, you can select a screensaver, patient view, or none. The screen selected for the second monitor is displayed within the quick view pane area. Clicking the plus sign provides you with available screen options. There may be secondary screens for you to choose to display such as on the audiogram screen there is a diagram of the ear.

Located beside Quick View pane area

myUnitron account

This area allows you to see if you have signed into your myUnitron account in Unitron TrueFit. Once signed in, you will have access to features like Patient Ratings, myUnitron online services, etc.

If you have not signed in, click the link to see a dialog where you can enter your credentials, register for a new account, recover your password, and enable Patient Ratings.

Once you have signed in, your user name will be shown here. Click on it to see the following options:

- Sign out. Your user name will be remembered in Unitron TrueFit.
- Link to myInsights website

Recalculate



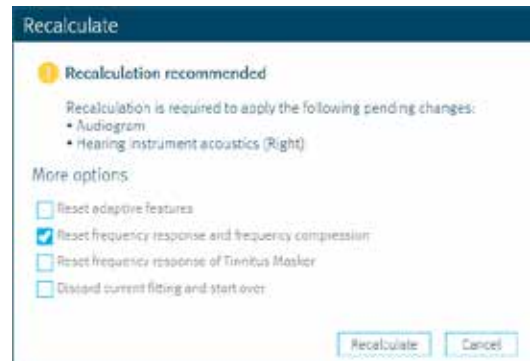
Recalculates the fitting based on the current audiogram, fitting formula, hearing instrument acoustics, etc.

Click the Recalculate button to see all the pending changes and the recalculation options.

The pre-selected recalculation options vary depending on the pending changes.

Note: The Recalculate button will be highlighted in orange when a recalculation is recommended during fitting.

When you enter the Fitting section with pending changes, for example, hearing instrument acoustics, the Recalculate dialog will appear to remind you that a recalculation is recommended before further fine tuning is performed.





Mute / unmute

Indicates the current state of the hearing instrument(s): muted or unmuted. Mute / unmute can be selected individually for each device or binaurally by clicking the centre of the button. The centre of the button also lists the currently active environment for the hearing instrument(s).



Fitting Mode

Fitting mode is designed to efficiently provide age-appropriate hearing aid settings based on the unique fitting needs of children versus adults. When client information is entered and the age is 18 years or less, Unitron TrueFit will automatically prompt you to select the appropriate fitting mode option via a pop-up window. The fitting mode can be changed by clicking on the button and selecting the desired setting from the drop-down box.

Note: Fitting mode defaults can be edited under [Options > Preferences > Fitting Session > Pediatric Modes](#)

Client menu



Information

NOAH version

When running Unitron TrueFit under NOAH, the information screen is primarily for reference purposes.

Standalone version

When running the Unitron TrueFit standalone version, the Client > Information screen is the interface with the client database.

To enter a new client in standalone:

1. Click on the New Client button.
2. Enter the client information in the appropriate fields. The minimum required information is indicated with an asterisk (*).

Note: The client's gender will impact the targets generated by NAL-NL2; client's date of birth will impact the Automatic Adaptation Manager setting, the recommended fitting mode, and the default values assumed for acoustic transforms (e.g., RECDs).

3. Click Save. A Client Summary table at the bottom of the screen will be populated with the client information and the client will be visible in the Clients and Sessions table.

To edit client information in the future, click on the Edit Client button in the summary area, or click on the edit icon in the Clients and Sessions table.

To find client information in the database:

1. Type the client name and/or session information into the search field.
2. Click the Search icon. A list of client records matching the search criteria is displayed in the table. The list may be sorted by clicking the column headings.

To create a fresh session for the client containing no previous audiometric or fitting information, click on the Blank Session icon. In the Clients and Sessions table:

- Double clicking on a client will open the last session for that client or if the client does not have any sessions it will open a blank session.
- You can delete a specific client by clicking on the client and then clicking the Delete Client icon.
- For each client you can view all of their session information by clicking on the plus sign to the left of the client number.
- You can open a specific session by clicking on that session and then clicking the Open Session button or icon.
- You can delete a specific session by clicking on the session and then clicking the Delete Session icon.
- You can create a blank session by clicking on the client information and then clicking Blank Session icon.

Experience Level

The selected experience level with hearing instruments impacts the recommended initial Adaptation Manager setting. Choose from:

- i. First Time – No experience with hearing instruments
- ii. Short Term / Part Time – Less than 6 months or part time usage of hearing instruments
- iii. Long Term – Currently using hearing instruments full time

Audiogram

NOAH version

When running Unitron TrueFit under NOAH, the audiogram screen is primarily for reference. The transducer used for audiometry and the tinnitus match sections are used as described below. To enter or change all other audiometric information, use the NOAH audiogram module.

Standalone version

When running the Unitron TrueFit standalone version, the audiogram screen provides the ability to enter the client's audiometric test results.

Select the transducer used for audiometry from the dropdown menu.

Note: ABR eHL and ABR nHL data is only used with the DSL v5 fitting formula.

To complete the audiogram, enter the data for the appropriate ear by clicking on the graph. Right clicking the graph provides the option to: [Set point](#), [Remove point](#), [Remove all points](#) or [Copy \(all curves\)](#) or [Copy selected curve](#) to the other ear. In addition, right clicking provides the option of specifying the measurement type for each data point; choose from: [Unmasked](#), [No response](#), [Unmeasurable](#), [Masked](#), [Masked and no response](#) or [Masked and unmeasurable](#).

To enter air conduction data, click on the [AC](#) button.

To enter bone conduction data, click on the [BC](#) button.

To enter uncomfortable loudness level data, click on the [UCL](#) button.

Note: NAL-NL1 and NAL-NL2 do not use UCL data for target generation.

To copy the entered curve from one ear to the next, click on the [arrow](#) icons above the graph for the respective ear.

To delete all of the curves on the audiogram, click on the [Remove](#) (Delete) icon.

Click on [Use Audiogram](#) to use the Audiogram for fitting formula targets.

Click on [Use In Situ](#) to use the measured In Situ data for fitting formula targets.

Note: In cases where an In Situ measurement was previously conducted, you will see this information faded in the background behind the standard audiogram data when Use Audiogram is selected.

If desired, speech sounds and common sound icons can be displayed on the audiogram for counselling purposes by selecting the check box for the desired information.

[Measured Tinnitus Match](#) information can be entered at the bottom of the Audiogram screen.

To enter tinnitus pitch match frequency, type in the value directly or choose a desired frequency via the dropdown box. The entered frequency must be between 125 Hz and 8000 Hz.

To enter the corresponding tinnitus loudness level, type in the value directly or choose a desired dB SL value via the dropdown box. The entered value must be between 0 and 20 dB SL.

Note: Tinnitus match information is only used in the pre-calculation of the tinnitus masker noise.

RECD

This screen provides the option to enter real-ear- to-coupler difference (RECD) values or import them if they already exist in NOAH. (See Importing RECD or REUG from NOAH). If RECD values have not been measured, age-appropriate average values generated by the selected fitting formula will be used for the quick fit calculation.

To complete the RECD screen, enter the data for the appropriate ear by clicking on the graph. Right clicking on the graph also provides the option to: [Set Point](#), [Remove Point](#), [Remove all points](#) or [Copy](#) to the other ear. The entered curve can also be copied to the other ear by clicking on the [arrow](#) icons located between the graphs.

Select the earpiece used during the measurement from the drop-down menu located at the bottom of the screen; choose from [Custom earmold vented](#), [Custom earmold occluded](#) or [Foam eartip](#). Unitron TrueFit will default to the appropriate 2cc coupler reference.

Click on [Use Entered](#) to use the RECD data entered into the graph as the basis of fitting formula targets. Click on [Use Average](#) to use age appropriate average RECD values as the basis of fitting formula targets.

Note: If a hearing instrument is already selected a grey curve will appear on the RECD graph. This grey curve represents the average data for the client's age and earpiece condition.

REUG

This screen provides the option to enter real-ear unaided gain (REUG) values or import them if they already exist in NOAH. (See Importing RECD or REUG from NOAH). If REUG values have not been measured, age-appropriate average values generated by the selected fitting formula will be used for the quick fit calculation.

To complete the REUG screen, enter the data for the appropriate ear by clicking on the graph. Right clicking on the graph also provides the option to: [Set Point](#), [Remove Point](#), [Remove all points](#) or [Copy](#) to the other ear. The entered curve can also be copied to the other ear by clicking on the [arrow](#) icons located between the graphs.

Select the sound field speaker location used during the measurement from the drop-down menu, choose from: [0 degrees](#), [45 degrees](#) or [90 degrees](#) azimuth.

Click on [Use Entered](#) to use the REUG data entered into the graph as the basis of fitting formula targets. Click on [Use Average](#) to use age appropriate average REUG values as the basis of fitting formula targets.

Note: If a hearing instrument is already selected a grey curve will appear on the REUG graph. This grey curve represents the average data for the client's age and speaker location.

Importing RECD or REUG from NOAH

If there is RECD and / or REUG data stored in NOAH for the current patient, then on the RECD and / or REUG screen there will be a button that asks if you would like to import this data. Importing the data from NOAH will overwrite data that you had manually entered in TrueFit.

Instruments menu



Selection

The Selection screen provides the option to detect or simulate a hearing instrument.

Detect hearing instrument(s):

1. Choose the desired programming interface from the drop-down menu. Choose [Noahlink Wireless](#), [iCube II / iCube](#), [NOAHlink](#) or [HI-PRO](#).

Note: HI-PRO refers to the original HI-PRO, USB HI-PRO and HI-PRO 2. The HI-PRO that is actually used is configured using the HI-PRO configuration tool.

2. Click the [Detect](#) button to perform a detection.



Note: BTE and RIC fittings using iCube II/ iCube may need to be assigned to a side (right or left). Select the [Play beep button](#) in the [Detection](#) dialog window to confirm the side assigned to each instrument.

Note: If using Noahlink Wireless, put hearing instruments in pairing mode by opening and closing the battery door. Pairing mode lasts for 3 minutes. To identify hearing instruments, use Play beep button or press the push button (if applicable) on the hearing instruments to highlight corresponding instrument on screen.

3. In cases where the data in the hearing instrument differs from that stored in the software:
 - Click [Use fitting](#) from hearing instrument to use data stored in the hearing instrument (including any data logging / learning information).
 - Click [Use fitting](#) from this session to use data stored in the software.
 - Click [Create new fitting](#) to setup the hearing instrument using software defaults.

The hearing instrument model, style, matrix and serial number are displayed after detection along with the audiogram and fitting range for each side. In addition, the communication status is updated on the Connection tab of the Quick View Pane (upper right corner of screen). For most product styles, you will also have a couple of acoustic options that you can select here or you can go to the full list under [Instruments > Acoustics](#). Any changes made here will also be updated on the [Instruments > Acoustics](#) screen. The guided fitting option will open automatically for hearing instruments without a previously stored fitting.

Simulate hearing instrument(s):

1. Click the button for your desired product line in the hearing instrument simulation section on the left hand side of the screen. If you know what technology level you want, you can also click directly on the technology level button within the product line button to skip step 2.
2. Click on the desired technology level. To see more information about the different technology levels, click on the + sign beside the Technology Level title to view a feature comparison.
3. Select the desired style for that product line and technology level. To see more information about each style, click on the + sign beside the Styles title. When selecting a product style for simulation, clicking the centre of the button performs a binaural selection, while clicking the R or L buttons performs a monaural selection. At the top of the screen, under Current Product in this Session, you can see a summary of the products you have selected. For most product styles, you will also have a couple of acoustic options that you can select here or you can go to the full list under Instruments > Acoustics. Any changes made here will also be updated on the Instruments > Acoustics screen. Furthermore, if you wish to detect a product while on the simulation screen, select the desired programming interface from the drop-down menu in the upper left column of the screen, and then click Detect. The process will follow the steps outlined above in the Detect hearing instruments section of this guide.

Technology Change

Select the Technology Change screen to access FLEX™ functionality. Products compatible with FLEX can be identified with the FLEX check icon located at the bottom right corner of the screen. With FLEX:TRIAL devices, you can select from one of the displayed technology levels. Clicking on one of the technology level buttons will launch the Change Technology Level wizard. Follow the on-screen instructions to change the technology level of the connected FLEX:TRIAL hearing instruments. The wizard will provide the following options: [Transfer fitting](#), [Create new fitting](#).

If you select [Transfer fitting](#), then the program structure, frequency response, acoustics, Automatic Adaptation Manager status and accessories in the current client session will be transferred to the hearing instruments after the technology level change is complete.

If you select [Create new fitting](#), then after the technology level change is completed, the hearing instruments will be set to the recommended defaults. Select your desired option and continue through the steps in the wizard.

Following completion of the technology change, proceed to [End Fitting > Beeps > Trial Duration](#) to configure the duration of the client's trial period with the hearing instruments. When the trial period expires, the 'End of trial.' beeps will play. See the End Fitting menu section for more details.

Note: The transfer fitting process will reset all adaptive features to the recommended defaults for the new technology level.

Note: Create new fitting will reset all hearing instrument settings including the acoustic options. You should confirm that the hearing instrument parameters are set as desired

following this process.

Note: The data logging in the hearing instrument will be lost during this process.

Note: The current technology level contained within the hearing instrument is indicated by the shaded blue button and also is displayed in the Quick View Pane connection tab.

Note: FLEX:TRIAL is available for Stride BTE, Moxi RIC (except Moxi Now), Max BTE and Quantum BTE products. For Moxi Now products, you can use a Moxi Fit or Moxi Kiss device and then transfer the settings to a Moxi Now device after the trial.

Acoustics

Select the Acoustics screen to configure items such as: coupling, venting, earhook, tubing, earpiece, receiver unit, and Peak Resonance.

BTE and RIC instruments

- If you have ordered your earmold, cShell, or sleeve molds with IntelliVent, enter the code and the software will automatically use the optimal venting.
- For BTEs select Regular Tube, Slim Tube or Power Slim Tube (Max only).
 - For BTEs with an earhook, select Vent size, Earhook type and Tubing type.
 - For BTEs with Slim Tube, select your Ear Piece, Vent and Tubing Length (optional).
 - For Max BTEs with Power Slim Tube, select your Ear Piece, Vent and Tubing Length.

Note: The tubing length parameter is for record keeping with slim tubes and has no impact on the output of the system. In contrast, tubing length will impact Max products with power slim tubes and should be set appropriately as this parameter will influence the quick fit.

- For RICs (Moxi's), select your Receiver, Ear Piece and Wire Length (optional).

Note: The wire length parameter is for record keeping only and has no impact on the output of the system.

Note: Click on the Quick Fit button after configuring the acoustic parameters to ensure the product fitting considers these aspects.

Custom instruments

For custom instruments, you can configure the vent. If you have ordered the custom products with IntelliVent, the software will automatically read the code and use the optimal venting.

Note: With simulated fittings, you can also select the shell and receiver type using the provided drop-down menus on the Acoustics screen (if applicable). In contrast, these parameters are read from the detected hearing instrument and cannot be changed through the software.

Accessories

The accessory screen will show those accessories which are compatible with the hearing aid(s) selected or detected. By clicking on the accessory, you can activate or simulate an accessory for configuration purposes.

If an accessory button has a check mark in the corner, then at least one of these accessories has been added to the fitting. You will also see the serial number of an activated accessory or the word Simulated if the accessory has just been simulated.

Remote Control / Remote Control 2

To pair a remote control:

1. Click the [Remote Control](#) button.
2. Click the [Activate](#) button.
3. A Detect new accessories pairing wizard appears. Connect a USB cable to the remote control and your computer, and follow the on-screen instructions.
4. After pairing, the serial number of the paired remote control is automatically shown in the serial number box. Various check boxes and a drop-down menu appear to configure the remote control.

To simulate a remote control:

1. Click the [Remote Control](#) button.
2. Click the [Simulate](#) button.
3. The serial number box will say Simulated Remote Control and a graphic with various configuration options appears.

Note: You can select the [Delete](#) icon to remove any paired / simulated accessory from the fitting. You can add up to 4 remote controls to the hearing instrument fitting. Any simulated remote control can be added later to the fitting by clicking the [Activate](#) button beside the row assigned to the simulated accessory. To modify the configuration of a paired remote control, click on the serial number of the device you would like to modify.

uDirect 2 / uDirect 3

To pair [uDirect 2 / 3](#):

1. Click the [uDirect 2 / 3](#) button.
2. Click the [Activate](#) button.
3. Detect new accessories pairing wizard appears. Connect a USB cable to the [uDirect 2 / 3](#) and your computer, and follow the on-screen instructions.
4. After pairing, the serial number of the paired uDirect 2 / 3 is automatically shown in the serial number box. Various check boxes and a drop-down menu appear to configure uDirect 2 / 3. These controls include:

- Notification Options

There are three levels of notification.

1. Warnings only – low uDirect 2 / 3 battery; Bluetooth pairing process.

2. Standard – Warnings only notifications + uDirect 2 / 3 on/off; starting/ending charging during streaming; input channel confirmation; FM announcements; plus for uDirect 3 transfer call and hold call.
3. Detailed – Standard notifications + starting/ending charging without active streaming; external microphone connection; Bluetooth device connect/disconnect; transfer call; hold call.

In addition, you can select whether the notifications above are provided via ‘Beeps’ or ‘Spoken’ words. Should you select ‘Spoken’, you have the option of selecting the language used for the notifications, selected via the provided drop-down menu.

- Enable Caller ID – select to enable / disable the use of spoken caller ID notification for incoming call on phones supporting this feature.

- Phone Streaming Functions

Access button options:

1. Redial – select to enable redialing of the last number called on phones supporting this feature.
2. Transfer call back to phone – select to enable the client to transfer a streamed phone call back to their paired phone.

Connect button options:

1. Voice dial – select to enable voice dialing for phones supporting this feature.
2. Hold – select to enable access to the functionality to put a phone call on hold.
3. Hear own voice during call – select to allow user to hear their own voice during a call which is more natural sounding, especially for closed fittings. Select the desired attenuation for the client’s own voice.

- Remote Control Functions:

Check this to allow the uDirect 2 / 3 to function as a remote control when the hearing instrument is not in streaming mode. Configure the ‘Plus/Minus’ buttons. Enabling Remote Control Functions also makes it possible for the hearing instrument state information to be passed to the uControl app providing context for Patient Ratings.

To simulate uDirect 2 / 3:

1. Click the [uDirect 2 / 3](#) button.
2. Click the [Simulate](#) button.
3. The serial number box will say Simulated uDirect 2 / 3 and a graphic with various configuration options appears.

Note: You can select the [Delete](#) icon to remove any paired / simulated accessory from the fitting. You can add up to 4 uDirect 2 / 3 to the hearing instrument fitting. Any simulated uDirect 2 / 3 can be added later to the fitting by clicking the [Activate](#) button beside the row assigned to the simulated accessory.

Note: To perform remote control functions, the uDirect 2 / 3 must be paired to the

hearing instrument. You can use the uDirect 2 / 3 without pairing it with the hearing instruments, but for streaming only.

Note: Allow uDirect 2 / 3 streaming to other wireless Unitron hearing instruments: Uncheck to prevent uDirect 2 / 3 from working with Unitron devices it has not been paired with.

Note: To modify the configuration of a paired uDirect 2 / 3, click on the serial number of the device you would like to modify.

Note: The input volume correction is not required with this accessory given the user can configure the volume level of streamed signals via the +/- buttons on the front of uDirect 2 / 3 and the accessory will maintain the user's adjustments for future streamed signals.

uStream

To pair uStream:

1. Click the **uStream** button.
2. Click the **Activate** button.
3. Detect new accessories pairing wizard appears. Connect a USB cable to the uStream and your computer, and follow the on-screen instructions.
4. After pairing, the serial number of the paired uStream is automatically shown in the serial number box. Various check boxes and a drop-down menu appear to configure uStream. These controls include:

- Notification Options

There are three levels of notification

1. Warnings only – low uStream battery; Bluetooth pairing process
2. Standard – Warnings only notifications + uStream on/off; starting/ending charging during streaming; input channel confirmation; transfer call; hold call
3. Detailed – Standard notifications + starting/ending charging without active streaming; external microphone connection; Bluetooth device connect/disconnect

In addition, you can select whether the notifications above are provided via 'Beeps' or 'Spoken' words. Should you select 'Spoken', you have the option of selecting the language used for the notifications, selected via the provided drop-down menu.

- Enable Caller ID – select to enable / disable the use of spoken caller ID notification for incoming call on phones supporting this feature
- Phone Streaming Functions

Access button options:

Redial – select to enable redialing of the last number called on phones supporting this feature.

Connect button options:

Hear own voice during call – select to allow user to hear their own voice

during a call which is more natural sounding, especially for closed fittings.
Select the desired attenuation for the client's own voice.

- Remote Control Functions

Check this to allow the uStream to function as a remote control when the hearing instrument is not in streaming mode.

Note: Allow uStream to stream to other wireless Unitron hearing instruments: Uncheck to prevent uStream from working with Unitron devices it has not been paired with.

Note: To perform remote control functions, the uStream must be paired to the hearing instrument. For streaming only you are able to use the uStream without pairing it to the hearing instruments.

Note: You can select the Delete icon to remove any paired accessory from the fitting. You can add up to 4 uStreams to the hearing instrument fitting.

Note: To modify the configuration of a paired uStream, click on the serial number of the device you would like to modify.

Note: The input volume correction is not required with this accessory given the user can configure the volume level of streamed signals via the +/- buttons on the front of uStream and the accessory will maintain the user's adjustments for future streamed signals.

To simulate uStream:

4. Click the [uStream](#) button.
5. Click the [Simulate](#) button.
6. The serial number box will say Simulated uStream and a graphic with various configuration options appears.

Note: You can select the [Delete](#) icon to remove any simulated accessory from the fitting. You can add up to 4 uStreams to the hearing instrument fitting. Any simulated uStream can be added later to the fitting by clicking the Activate button beside the row assigned to the simulated accessory.

Note: uStream does not need to be paired to work with Stride & Moxi hearing instruments.

[uControl app](#)

The uControl app button is disabled until you include a uDirect 3 or uStream in the fitting. The uControl app does not need to be included in a fitting in order to use the app, however there are three benefits to including the uControl app in a fitting:

1. Instructions on how to access the uControl app can be viewed and / or emailed to the patient.
2. The uControl Getting Started Guide information can be printed and / or emailed to the patient.
3. The Patient Ratings feature can be activated on the app (details below).

Click on [Include uControl](#) in fitting to add the uControl app to the fitting.

Remote Plus app

The Remote Plus app is only available for Bluetooth enabled hearing instruments. The app does not need to be included in the fitting in order to use it.

To install the app and activate Patient Ratings, click on the Go to Patient Insights Setup screen button (more details in Patient Insights Setup screen).

Patient Ratings

Patient Ratings must be enabled in the software to allow activation. To enable Patient Ratings, you need to have a myUnitron account and log into TrueFit with that account.

When hearing instruments are detected for a new patient, an activation code will be automatically generated. The patient then enters this code into the uControl app or the Remote Plus app to activate the feature for them to start rating their hearing instruments.

Click the Send instructions to my patient's smartphone to send them information on how to activate Patient Ratings.

If a Patient Ratings code was created, then the uControl Getting Started Guide will include information about Patient Ratings.

Note: The Patient Ratings feature requires an internet connection.

Pre-Fitting

Super Power pre-sets (if applicable)

Select your desired pre-set as a starting point for your super power hearing instruments fitting.

- Classic: A classic approach to sound processing - for those who prefer things the 'old way' with little to no signal processing and no directionality.
- Conventional: A conventional approach to sound processing - for those who prefer a more traditional approach to amplification, including moderate signal processing and some directionality.
- Current: A current and modern approach to sound processing - for those who prefer the latest technology, including advanced signal processing and directionality.

Fitting Formula

Select your desired fitting formula from the provided drop-down menu: DSL v5 Adult, DSL v5 Pediatric, NAL-NL1, NAL-NL2, and NAL-NL2 Tonal Language.

Processing Strategy

With DSLv5 adult or DSLv5 pediatric, select your desired processing strategy from the drop-down menu: WDRC or Linear.

Note: Selecting NAL-NL2 or NAL-NL1 provides a WDRC processing option only.

Tinnitus Masker Strategy

Select your desired tinnitus masker signal strategy from the drop-down menu: [Audiogram-based](#), [White Noise](#), or [Pink Noise](#).

Note: The Tinnitus Masker Strategy task box will only be visible with products supporting this feature.

Note: The tinnitus masker strategy impacts the quick fit calculation for the frequency shape of the tinnitus masker noise. The tinnitus masker noise can be viewed and fine tuned in the [Fitting](#) > [Tuning](#) > [Tinnitus Masker](#) task box.

Frequency Compression Strategy

Specify if Frequency Compression 2 calculates each side independently.

In Situ

Use the In Situ screen to assess hearing sensitivity and uncomfortable loudness levels via signals generated by the hearing instruments. The In Situ measurement results can be used to define the fitting formula targets.

1. Click on the [Start In Situ](#) button for the device / ear you would like to assess.
2. An In Situ wizard will appear. Preparation information is provided to assist with the test.
3. Select the coupling option to be used for the In Situ test. The options available will depend on the form factor being fitted and can include:
 - a. Vented (current vent value). Note: Ensure the product venting is configured correctly in the acoustics screen as it will impact the signal level generated by the device.
 - b. Temporarily occluded earpiece.
4. After the coupling option is selected, click Continue to get to the In Situ measurement step.
5. Select the desired measurement type (AC: air conduction or UCL: uncomfortable loudness level) via the appropriate button.
6. Select the desired frequency /presentation level by clicking on the graph.
7. Present the tone by using the space bar or by clicking the Present Tone button.
8. To present tones automatically when you click on the graph, select the Enable Autoplay option.
9. If you desire to present tones at a loudness level beyond the safety limit of 100 dB HL, select the [Enable HL > 100 dB HL](#) option.
10. To speak with the client during the test, the hearing instrument microphones must be enabled by clicking on the Talk to Client button. The volume level of the device can be adjusted as required using the up/down volume arrow keys.

If you would like to use the In Situ data as the basis for the hearing instrument quick fit, check the Use In Situ data to recalculate hearing instrument settings check box. Following completion of the test, the In Situ data will be displayed on the graph, along with any previous standard audiometric data if it is available.

Note: If a previously entered audiogram is available in the session, it will be shown faded into the background for reference purposes on the In Situ and Audiogram screens.

Click on [Use Audiogram](#) to use the entered standard audiometric data for fitting formula targets.

Click on [Use In Situ](#) to use the measured In Situ data for fitting formula targets.

Note: The In Situ data can be deleted using the [Remove](#) (Delete) icon above the graph.

If desired, speech sounds and common sound icons can be displayed on the audiogram for counselling purposes by selecting the check box for the desired information.

Fitting menu



Feedback Optimization

Select the Feedback Optimization screen to run the feedback test.

1. Click the [Start Feedback Test](#) button.
2. Follow the on-screen instructions to perform feedback optimization. The status of the test appears above the graph (complete, incomplete, not run). In cases where the environment may have impacted the test (e.g., excess noise present), the final results include a combination of measured values and predicted feedback threshold values. The status then indicates Incomplete. Repeating the test will replace any predicted values with measured values if they can be reliably obtained in the current test environment.

Once the feedback test is completed, the hearing instrument's gain is limited as shown on the graph where:

- Black line = feedback threshold
- Grey line = hearing instrument gain limit
- Green line = target gain for 50 dB pure tone input
- Red or Blue line = aided gain for 50 dB pure tone input

Note: If desired, the feedback test can be deleted using the Delete icon above the graph for the device / ear in question.

Note: The phase canceller is enabled prior to running the feedback optimization test and the quick fit will be limited to the predicted maximum stable gain. Following the feedback test, the device is automatically quick fitted up to the desired adaptation manager level setting, but not beyond the measured maximum stable gain curve.

Note: For some products, after running the feedback optimization test the gain limit of the hearing instrument can be increased by up to 5 dB by clicking the checkbox under the graph for that instrument.

Program Manager

Select the Program Manager screen to add or remove additional manual programs, copy programs, rename programs, change program order, and assign easy-t / easy-DAI access (when applicable).

To add programs to the manual program list:

1. Select the program name under the Available Programs list or click the arrow next to the program name OR
2. Click the [Copy](#) icon beside the program that you would like to copy from the Selected Programs list.

To remove manual programs:

- Click on the [Delete](#) icon next to the program in question.

To rename programs:

- Click the program name under the Selected Programs header.

To assign easy-t to a program in devices supporting this feature:

- Add a telephone program that has easy-t capability and select the easy-t check box beside that program in the column list.

Note: Easy-t can only be assigned to one telephone program.

To assign easy-DAI to a program in devices supporting this feature:

- Add a DAI program and select the easy-DAI check box beside that program in the column list.

Note: Easy-DAI can only be assigned to one DAI program.

To reorder manual programs:

- Click on the [Move Program Up](#) or [Move Program Down](#) icon next to the program in question.

Note: To select which program is the start-up program, go to the [End Fitting](#) > [HI Setup](#) > [Startup Settings](#) task box. By default, the Automatic Program / SoundNav is the start-up program when it is included in the program toggle sequence. To remove the Automatic Program / SoundNav, easy-t and/or easy-DAI from the program toggle sequence, go to [End Fitting](#) > [HI Setup](#) > [Program Toggle](#) task box.

Note: Mute program is only available for some products. If the mute program is not available, then create a Quiet program and then change the Input strategy under [Fitting](#) > [Configure Features](#) to Mute.

Configure Features

Select the [Configure Features](#) screen to adjust various adaptive parameters in the hearing instrument by clicking the desired task item.

Note: Within the configuration boxes for the various adaptive features, both ears are linked by default. To unlink, click the [link / unlink](#) icon within each feature's task box.

Phase Canceller

Select your desired phase canceller strength from the provided options.

AntiShock 2

1. Click [AntiShock 2](#)
2. Select your desired AntiShock strength from the provided options.

SmartFocus / SmartFocus SP / SmartFocus 2

This feature is available for products prior to the North and Tempus platforms.

1. Click the SmartFocus / SmartFocus SP / SmartFocus 2 Configuration task item at the bottom of the screen.
2. Select your desired position using the provided slider.

Note: If desired, click on the icon to view the frequency response.

Sound Conductor

This feature is available for products on the North and Tempus platforms.

Depending on selected environment / manual program, adjustments to this feature can impact underlying speech enhancement, noise reduction, and/or directional strength. Please see feature diagram in software for more information.

1. Select your desired position using the provided slider.
2. The selected number for Sound Conductor will provide different strengths of underlying parameters depending on the environment.
3. A specific setting, such as "3" for Sound Conductor within environments under Conversations and No Conversations will have different underlying feature strengths.

Wind Noise Manager / Wind Control

1. Click the Wind Noise Manager / Wind Control.
2. Select your desired wind noise manager strength from the provided options.

Input

1. Click [Input](#).
2. The available microphone input options depend on the product and program being adjusted.

Note: For environments that offer mixed inputs (e.g., Telecoil + Microphone, Audio Streaming + Mic, Direct Audio Input + Mic), the microphone level can be adjusted using the mic attenuation slider from 0 to -30 dB with the exception of easy-DAI.

Note: When Binaural Phone is activated, the input selection task box offers the ability to configure phone ear inputs (Telecoil + Microphone with 0 to -30 dB mic attenuation; or Omni) and non-phone ear inputs (Audio Streaming + Mic with optional 6 dB mic attenuation or a mic attenuation slider from 0 to -30 dB available with some products).

Automatic Controls

Note: This option is available when the automatic program or one of its environments are selected.

1. Click the [Automatic Controls](#).
2. If available, select the client's Highest Priority and Lowest Priority environments from the provided drop-down menus (these settings are available with some Era products).
3. If desired, adjust the Sensitivity control using the provided drop down menu to impact how quickly the Automatic Program / SoundNav responds to changes in the environment.

Note: The automatic controls should be left in their default positions for the initial fitting and reviewed later if the client has concerns regarding the instruments' switching behavior.

Note: This feature is global for all environments.

Binaural Phone

Note: This feature is available when a telephone program is selected in a binaural fitting for select wireless products.

1. Click [Binaural Phone](#).
2. Click the [Enable Binaural Phone](#) check box to activate this feature.
3. Select the client's [Preferred phone ear when selected using remote](#) from the provided drop-down menu. This choice impacts the streaming direction when Binaural Phone is activated using the remote control phone button.
4. Click the [HI push button selects phone ear](#) check box to have the system stream the phone signal in either direction based on which push button was used to toggle into the Binaural Phone program. That is, the phone ear is identified as the side which had its push button activated.

Note: When accessing Binaural Phone streaming using easy-t, the phone ear is automatically identified as the side that triggered easy-t (ie., the ear where the phone receiver is located).

Note: When Binaural Phone is activated, the input selection task box offers the ability to configure phone ear and non-phone ear inputs (mic attenuation).

Car with Speech Direction

This program is not available with all models.

1. Click [Speech Direction](#).
2. Use the drop-down menu to change the direction of the speech based on hearing needs.

MyMusic

MyMusic is available when a music environment or program is selected.

1. Click [MyMusic](#).
2. Choose one of the default offsets from the provided drop-down menu.

Tuning

Select the [Tuning screen](#) to adjust Adaptation Manager, Occlusion Manager, Bass Enhancer (Max only), Soft/Mod/Loud Controls, MPO/Gain/CR Controls, Frequency Compression (select products), Fitting Advice, and Tinnitus Masker (select products). The settings for each program automatically default to suggested values. Prior to adjusting any of the parameters listed above, select the program you would like to tune from the program selector list on the left side of the screen. The active program is highlighted and its name is listed above the graphs and in between the mute buttons.

Note: All Programs is selected by default in the Tuning section. This ensures that the relative differences across all programs are maintained when making changes and helps to maintain seamless transitions in the Automatic Program / SoundNav.

To fine tune the hearing instrument:

Select the desired program from the program selector list on the left side of the screen.

- To select all programs for modification, click the All Programs button at the top of the program selector list.
- To select all automatic programs, click the Automatic / SoundNav program header above the individual environments.
- To select all manual programs, click the Manual program header above the individual manual programs.
- To select all wireless programs, click the Wireless program header above the wireless programs.
- To select an individual program or environment, click the program name or environment in the program selector list.

Note: To simplify the view, you can click the plus / minus sign beside the program header to collapse or expand the program list for that category.

Adaptation Manager

1. Click on the [Adaptation Manager](#) task item at the bottom of the screen.
2. Select the Automatic check box to activate the Automatic Adaptation Manager (AAM). With Max products, select the Automatic / Power check box to activate the Automatic Adaptation Manager or the Power Adaptation Manager (PAM). The software will use a proprietary calculation that considers the client's hearing loss, age, and hearing instrument experience level (as indicated on the Client / Experience Level screen) to determine the starting adaptation manager setting and the adaptation rate for the fitting.
3. If desired, select the speed of adaptation for the current fitting using the provided

dropdown box. Choose from the following adaptation rates (the number of weeks / months changes depending on the difference between the Current Value and End Value):

- 5% per week (~ 6 weeks)
- 5% per 2 weeks (~ 3 months)
- 5% per 3 weeks (~ 5 months)
- 5% per 1 month (~ 6 months)
- 5% per 2 months (~ 12 months)
- 5% per 3 months (~ 18 months)
- 5% per 4 months (~ 24 months)
- 5% per 5 months (~ 30 months)
- 5% per 6 months (~ 36 months)

Note: For Max, when the Current value is above the End Value, the above choices represent the approximate time for a 5% decrease in the current value of PAM.

Note: For calculation purposes, the adaptation rate assumes one week of use = 70 hours (i.e., 10 hours / day). Thus at the follow-up appointment, the Current position may differ from what is expected based on calendar days depending on the client's actual usage time per week.

4. If desired, you can adjust the Current position (% of target) and the desired End Value (% of target) for the chosen fitting formula using the provided sliders. If this is a follow-up fitting and the Automatic Adaptation Manager is enabled, then you will see a grey bar representing the adaptation progress that has been made so far.

Note: The predicted Time remaining to reach the end value will be updated automatically depending on the relative position of the Current and End Value sliders.

Note: If desired, the AAM or PAM can be disabled by de-selecting the Automatic check box. You can then select their desired adaptation manager setting using the Current slider.

Note: This feature is global and will impact all programs.

Note: For Max products, adaptation manager settings above 100% affect both the '% of target gain' provided and the MPO setting of the hearing instrument. Adaptation manager settings below 100% impact only % of target gain.

Occlusion Manager

1. Click the [Occlusion Manager](#) task item at the bottom of the screen.
2. Select your desired occlusion manager setting using the provided options to address any occlusion related complaints.

Note: This feature impacts all programs by default but there is an option to exclude the music program.

Bass Enhancer

1. Click the [Bass Enhancer](#) task item at the bottom of the screen.
2. Select your desired bass enhancer setting using the provided slider to increase low frequency gain and MPO (emphasis below ~ 1 kHz).

Note: This option is available with Max products. The feature is global and will impact all programs.

Soft / Mod / Loud Controls

1. Click the [Soft / Mod / Loud Controls](#) task item at the bottom of the screen.
2. Select the program(s) you wish to modify using the program selector list as described above.
3. Select the frequency resolution using the provided buttons.
Note: The frequency resolution depends on the technology level of the product you are fitting.
4. Select the frequency region(s) and input level(s) to be modified in the provided table:
 - To select an individual frequency region, select the desired value in the table.
 - A range of fitting values can be selected by either choosing a specific input label (loud, mod, soft), channel grouping label (low, mid, high or specific frequency columns) or the All table label. The selected frequency region(s) are highlighted in the table and shaded in the fitting graph.
 - To select multiple frequency regions for adjustment, you can also click and drag across the table. The slider bar along the bottom of the table allows you to view frequency regions that are outside the visible table area.
 - To view all frequency regions for a particular ear, and/or increase the size of the selectable boxes in the table, click on the [View right ear only](#) or [View left ear only](#) text as appropriate. To change the table view back to a binaural view, click on the text [View both ears](#).
 - Once you have selected your desired region for adjustment, click the dB drop-down menu to alter the step size of any change. Choose from 1, 2 or 3 dB.
 - Click the + or – buttons to apply the desired change.

Note: When a fitting handle has reached its maximum setting, the + button will grey out (disable). Conversely, if a fitting handle is at its minimum setting, the – button will grey out (disable).

Note: The table will also display the calculated compression ratios. The compression ratios are calculated based on the slope of the I/O curve between the TK soft and TK loud inputs.

MPO / Gain / CR Controls

1. Click the [MPO / Gain / CR Controls](#) task item at the bottom of the screen.
2. Select the program(s) you wish to modify using the program selector list as described above.

3. Select the frequency resolution you require for your modification using the provided tabs.

Note: TK soft speech control will be shown if selected within preferences.

4. Select the frequency region(s) and parameter type (MPO, Gain, CR or TK) to be modified.
 - To select an individual frequency region, select the desired value in the table.
 - A range of fitting values can be selected by choosing a specific parameter label (MPO, Gain, CR or TK). The selected frequency region(s) is highlighted in the table and shaded in the fitting graph.
 - TK soft speech can be used to adjust the gain for low level sounds. Impact of the adjustments is opposite to the other controls: increasing TK soft speech will decrease gain for low level sounds and vice versa.
 - To select multiple frequency regions for adjustment, you can also click and drag across the table. The slider bar along the bottom of the table allows you to view frequency regions that are outside the visible table area.
 - To view all frequency regions for a particular ear, and/or increase the size of the selectable boxes in the table, click on the [View right ear only](#) or [View left ear only](#) text as appropriate. To change the table view back to a binaural view, click on the text [View both ears](#).
 - Once you have selected your desired region and parameter type for adjustment, click the dB drop-down menu to alter the step size of any change. Choose from 1, 2 or 3 dB.
 - Click the [+](#) or [–](#) buttons to apply the desired change.

Note: When a fitting handle has reached its maximum setting, the [+](#) button will grey out (disable). Conversely, if a fitting handle is at its minimum setting, the [–](#) button will grey out (disable).

Note: The compression ratios are calculated based on the slope of the I/O curve between the TK soft and TK loud inputs.

Frequency Compression

Note: This option is available with select products.

1. Click the [Frequency Compression](#) task item at the bottom of the screen.
2. Select the program you wish to modify using the program selector list described above.
3. Click the [Enable Frequency Compression](#) check box to activate / deactivate this feature.
4. Adjust the Frequency Compression to the desired setting using the More or Less buttons. Adjusting the frequency compression impacts:
 - The frequency at which the compression will begin. Below this specified cut-off, no frequency compression will be applied.
 - The compression ratio or the amount of compression that will be applied in the frequency domain above the cut-off frequency.

Note: The software will automatically calculate the starting default position of the frequency compression based on the client's better ear audiogram and the fitting formula. With the DSL v5 pediatric fitting formula, frequency compression default settings are more aggressive (i.e. lower cut-off frequency, higher compression ratio) to emphasize audibility of high frequency speech cues for children.

Note: For clients with asymmetrical hearing loss, the frequency compression settings will be based on the audiometric thresholds from the better ear and applied to both devices in binaural fittings.

Note: The shaded region on the slider reflects the frequency compression region which is also displayed on the frequency response graphs.

Frequency Compression 2

Note: This option is available with select products.

1. Click the Frequency Compression 2 task item at the bottom of the screen.
2. Select the program you wish to modify using the program selector list described above.
3. Click the Enable Frequency Compression 2 check box to activate / deactivate this feature.
4. Adjust Frequency Compression 2 to the desired setting using the Audibility/Distinction and Consonant Clarity/Vowel Quality sliders. The sliders have the following impact:
 - Audibility/distinction: This slider adjusts both cut-off frequencies and the compression ratio. The default predicts the lowest possible setting required to provide audibility.
 - Audibility: improves audibility of high frequency sounds by lowering them into a useable/audible range (more frequency compression)
 - Distinction: improves distinction of high frequency sounds like 's' and 'sh' due to greater separation (less frequency compression)
 - Consonant clarity/vowel quality: This slider is dependent on the top slider and is automatically optimized for clarity but can be adjusted for sound quality.
 - Consonant clarity: increases the compressed range for high frequency sounds (consonants)
 - Vowel quality: decreases the compressed range for low frequency sounds (vowels).

Note: The software will automatically calculate the starting default settings for Frequency Compression 2 based on the client's better ear audiogram and the fitting formula. To calculate each side independently go to Pre-Fitting > Frequency Compression Strategy.

Note: With the DSL v5 pediatric fitting formula, Frequency Compression 2 default settings are more aggressive (i.e. lower cut-off frequency, higher compression ratio) to emphasize audibility of high frequency speech cues for children.

Note: For clients with asymmetrical hearing loss, the Frequency Compression 2 settings will be based on the audiometric thresholds from the better ear and applied to both devices in binaural fittings. To calculate each side independently go to Pre-Fitting > Frequency Compression Strategy.

Note: The shaded region on the frequency response graphs reflects the Frequency Compression 2 region. The solid line at the beginning of the shaded region shows the cut-off frequency for high frequency dominated signals. The dashed line within the shaded region shows the cut-off frequency for low frequency dominated signals.

Fitting Advice

1. Click the Fitting Advice task item at the bottom of the screen.
2. Select the program(s) you wish to modify using the program selector list as described above.
3. Select the situation (type of sound environment) that is problematic for the client using the Select Situation dropdown box.
4. Select the concern that best describes the client's complaints for that sound type using the Select Concern dropdown box.
5. A description of the proposed change appears on the screen and an associated sound file is automatically selected by the media player.
6. If desired, play the associated sound file and/or apply the suggested change using the Apply button. Any previously applied undesirable changes can be removed using the Undo button.

Tinnitus Masker

This option is available when the product supports this feature. The tinnitus masker noise is disabled by default. When it is enabled, the quick fit level should be at a soft but audible level. The calculated masker noise level with the current settings will be displayed in dB(A) in the task box.

1. Click the **Tinnitus Masker** task item at the bottom of the screen.

Note: The graph view will automatically change to 'output' upon selection of the tinnitus masker task box to allow you to view the tinnitus masker output level relative to the hearing aid output settings.

2. Click the **Enable Tinnitus Masker** check box to activate the masker noise.
3. Click the checkbox beside Use client control to adjust noise level to allow patient to adjust the noise level using any volume or SmartFocus control on the hearing instruments or accessories. Selecting this option will prevent the client from adjusting the gain or the SmartFocus setting for this program.

Note: This setting is binaural and cannot differ across hearing instruments in the same fitting, even if the tinnitus masker is disabled or not available in one hearing instrument.

4. Select the frequency resolution you require for your modification using the provided tabs.

Note: The frequency resolution depends on the technology level of the product you are fitting.

5. Select the frequency region(s) to be modified in the table.

- To select an individual frequency region, select the desired value in the table.
- An entire frequency range of fitting values can be selected by choosing the 'Noise' label.
- To select multiple frequency regions for adjustment, you can also click and drag across the table. The slider bar along the bottom of the table allows you to view frequency regions that are outside the visible table area.
- To view all frequency regions for a particular ear, and/or increase the size of the selectable boxes in the table, click on the View right ear only or View left ear only text as appropriate. To change the table view back to a binaural view, click on the text View both ears.
- Once you have selected your desired frequency region for adjustment, click the dB drop-down menu to alter the step size of any change. Choose from 1, 2 or 3 dB.
- Click the + or – buttons to apply the desired change.

Note: When a fitting handle has reached its maximum setting, the + button will grey out (disable). Conversely, if a fitting handle is at its minimum setting, the – button will grey out (disable).

Note: The alerts tab will highlight once the generated masker noise setting reaches a value of 80 dB(A) or greater to indicate that care should be taken when exposing the client to continued noise at this level to avoid an adverse impact on hearing. A recommended daily usage time based on NIOSH standards (<http://www.cdc.gov/niosh/docs/98-126/>) will also be indicated considering the current masker noise level and updated as the noise level is adjusted. The noise level settings will be limited such that the generated noise never exceeds a level of 85 dB(A), assuming at least 8 hours of use / day to address concerns regarding the impact of continued noise exposure on hearing sensitivity from NIOSH guidelines.

Note: The tinnitus masker settings are global for the Automatic Program / SoundNav, so they will be the same in all Automatic Program / SoundNav environments, but the settings can vary across manual programs.

End Fitting menu



HI Setup

Select the HI Setup screen to configure the function of the user controls on the hearing instrument (e.g., push button and lever / dial) along with the activation of DuoLink (binaural wireless coordination) for each of these controls. In addition, HI setup allows you to adjust other hearing instrument parameters by clicking on the desired task item at the bottom of the screen. These options include volume settings, start up settings, data logging, Bluetooth & streaming and program toggle.

Push Button

To configure the functionality of the push button (when available), select the desired item from the drop-down menu

- No function: the push button is disabled on the hearing instruments.
- Program change: press the push button to toggle through the various listening programs.
- Volume up: pressing the push button increases the volume in steps. Once the hearing instrument reaches the maximum volume, the next step will bring it back to the default volume level.
- Volume down: pressing the push button decreases the volume in steps. Once the hearing instrument reaches the minimum volume, the next step will bring it back to the default volume level.
- Right louder / left softer: pressing the push button on the right device increases the volume for both hearing instruments. Pressing the push button on the left device decreases the volume for both hearing instruments.
Note: DuoLink must be on for this setting to function.
- Volume up / Program change: pressing the push button on the right increases the volume in steps; once the hearing instrument reaches the maximum volume, the next step will bring it back to the default volume level. Pressing the push button on the left changes the program.
Note: DuoLink must be on for this setting to function.
- Program change / Volume down: pressing the push button on the right changes the program. Pressing the push button on the left decreases the volume in steps; once the hearing instrument reaches the minimum volume, the next step will bring it back to the default volume level.
Note: DuoLink must be on for this setting to function.

- SmartFocus: R clarity, L comfort - pressing the push button on the right device moves the SmartFocus setting towards clarity for both hearing instruments. Pressing the push button on the left device moves the SmartFocus setting towards comfort for both hearing instruments.

Note: DuoLink must be on for this setting to function.

Note: The program toggle on the remote is not impacted by the setting of this control.

Note: Some hearing instruments support a short press and a long press. You can configure them separately on this screen.

Lever / dial

To configure the function of the lever / dial on the hearing instrument(s) (if available):

1. Click the drop-down menu under the lever / dial label on the primary screen.

Choose from:

- Volume Control: the lever / dial adjusts the volume level of the hearing instruments.
Note: DuoLink is disabled by default to allow independent adjustment of this control on each ear.
- SmartFocus: the lever / dial adjusts the SmartFocus setting in the hearing instrument.
Note: DuoLink is disabled by default to allow independent adjustment of this control on each ear.
- No function: the lever / dial is disabled on the hearing instrument.

Note: The + / – buttons and scroll wheel on the Smart Control remote are not impacted by the setting of this control.

Note: Only one user control on the hearing instrument can be assigned to perform a particular function. While both the push button and lever/dial can be configured as either a volume control or a SmartFocus control, both controls cannot perform the same function.

IIC / Micro CIC remote

To configure the function of the IIC remote / micro CIC remote (if available):

1. Click the drop-down menu under the IIC / Micro CIC remote function label on the primary screen. Choose from:
 - No function: the IIC / micro CIC remote is disabled.
 - Program change: bring the remote up to each hearing instrument to toggle through the various listening programs.
 - Volume up: bring the remote up to each hearing instrument to increase the volume in steps. Once the hearing instrument reaches the maximum volume, the next step will bring it back to the default volume level.
 - Volume down: bring the remote up to each hearing instrument to decrease the volume in steps. Once the hearing instrument reaches the minimum volume, the next step will bring it back to the default volume level.

Bluetooth & Streaming:

Bluetooth name: the name of the hearing instrument as seen by other Bluetooth devices. If no name is set a default value is used.

Phone ear: configure the hearing instrument that will be used to handle phone calls. If this value is changed, the newly selected hearing instrument will need to be paired to the user's phone after the fitting session has been closed.

Note: The Bluetooth name is visible to any Bluetooth device. Be mindful of sensitive information such as patient names or personal information when naming the device.

Volume Settings

1. Click the [Volume Settings](#) task item at the bottom of the screen.
2. Select the desired amount of increase in volume using the Volume Control Up drop-down menu.
3. Select the desired amount of decrease in volume using the Volume Control Down drop-down menu.

Note: The value selected in the volume control up and down boxes determines the volume control range provided to the client (as displayed in the volume settings task box). Each adjustment of the volume control using a remote or on the hearing instruments is 2 dB.

Start up Settings

1. Click the [Start up Settings](#) task item at the bottom of the screen.
2. Select the desired Start up Program from the drop-down menu.
3. Select the desired Start up Delay from the drop-down menu.

Data logging

1. Click the [Data logging](#) task item at the bottom of the screen.
2. Select the desired data logging and learning parameters (if applicable) from the drop-down menu.

Program Toggle Exceptions

1. Click the [Program Toggle Exceptions](#) task item at the bottom of the screen.
2. Uncheck the boxes to indicate which of the following you would like to exclude from the program toggle sequence:
 - The Automatic Program / SoundNav
 - The easy-t program (if applicable to the product being fitted)
 - The easy-DAI program (if applicable to the product being fitted)

Beeps

Select the Beeps screen to demonstrate and configure the various user notification beeps in the hearing instrument. These options include beep setup, beep enabling, and trial duration (FLEX devices only).

To demonstrate beeps:

There are a number of play buttons for various user notifications. Depending on the product being fitted, you have the option of playing beeps associated with:

- Program Change: choose the desired program to demo using the drop-down menu.
- Easy / Automatic Events: choose from Easy-t, uPhone activation, uAudio Bluetooth activation, uAudio audio jack input activation, uFM activation, or Smart Control telephone button activation.
- Warnings / Alerts: choose from low battery, LearnNow (if applicable), Smart Alert notification alerts (if applicable) and TV Connector available (if applicable).
- Trial Duration: play the 'End of trial period' beeps that will be generated in FLEX devices once the trial period has expired.
- Volume / SmartFocus: choose from: volume min/max, volume ideal (default), SmartFocus min/max, SmartFocus ideal (default), volume step change, SmartFocus step change.
- Phone Ring Tones: play provided ring tone.
- Startup Sound: play the startup sound.

Note: The phone ring tone notification is generated during uPhone activation with phones supporting this feature.

To play the selected notification through the hearing instrument, click the right or left play buttons beside the chosen drop-down menu.

Beep Setup

1. Click the [Beep Setup](#) task item at the bottom of the screen.
2. Select the intensity level from the drop-down menu.
Choose from: [Very Soft](#), [Soft](#), [Moderate](#), [Loud](#), or [Very Loud](#).
3. Select the frequency from the drop-down menu.
Choose from: [Low](#), [Medium](#) or [High](#).

Beep Enabling

1. Click the [Beep Enabling](#) task item at the bottom of the screen.
2. Select the beep notification types you would like active for the client. Choose from: [Program Change](#), [Start Up Sound](#) (initial sound which occurs upon the powering up of the hearing instruments), [Easy / Automatic Events](#) (events listed under the demo drop-down menu for this category), [VC & SmartFocus Min/Max](#) or [Volume Control Min/Max](#) (end of range), [VC & SmartFocus steps](#) or [Volume Control steps](#) (beeps that occur each time these user controls are changed), and [Warning / Alerts](#) (events listed under the demo drop-down menu for this category).

Note: The beeps that play at the end of the trial period with FLEX hearing instruments cannot be disabled. When the end of trial period beeps start to

sound, you can turn off the repeated beeps by resetting the trial period, i.e. by detecting and then saving to the hearing instruments.

Trial Duration

Note: This option is available with FLEX devices.

1. Click the [Trial Duration](#) task item at the bottom of the screen.
2. Select the desired trial duration before the 'End of trial period' beeps are generated in the hearing instruments.

Note: Once the trial duration has been exceeded, repeated beeps (End of trial period beeps) will be generated. Initially, these beeps will occur every hour for ~ 3 days of use, after which the instruments will repeatedly generate the beeps every minute.

Patient Insights Setup

The Patient Insights Setup screen provides an easy way for you to set up Patient Insights related features for your patients. Follow the steps below.

1. Log into myUnitron account.
2. Enable Patient Ratings
3. Generate an activation code
4. Send the invitation email to patients for them to download the Remote Plus app and activate Patient Ratings.

Note: Step 1 and 2 require a one-time setup through the myUnitron login dialog. Once hearing aids are detected, step 3 is completed automatically. Step 4 is the only step that needs to be done for every patient during an initial fitting.

Patient Language

In this tool box, you can configure the patient preferred language when they receive emails from Unitron. The selection will default to the language that is currently used in Unitron TrueFit. If language is not in the list, it defaults to English. Changing the patient language does not change Unitron TrueFit language in Preferences.

Overall satisfaction emails

In this tool box, you can enable or disable overall satisfaction email scheduling. The frequency of emails to be sent will be shown here. Email schedules are reset once a follow-up session is saved.

Fitting Summary

The Fitting Summary screen provides a succinct overview of primary fitting-related items in an easy-to-read table for each hearing instrument. The table provides an opportunity for a final check of the fitting settings and general status prior to printing, saving and closing the session.

The default table information is dependent on the product being fitted and can

include: Program List, Client Controls, General Status, Accessories, and Indicators. If desired, additional details can be viewed by clicking the More Info button which then displays Fitting Settings and Acoustics.

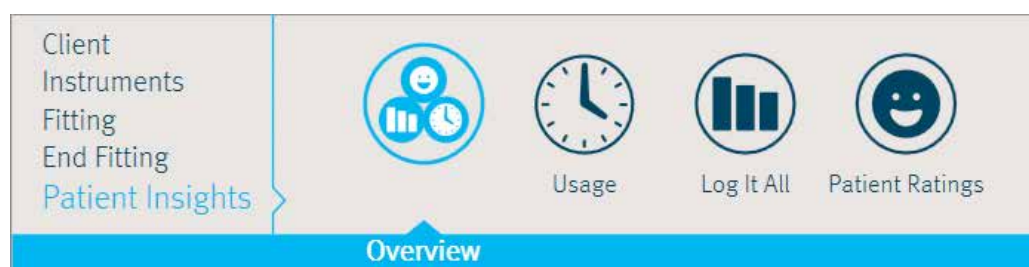
To end the fitting:

1. Select the check boxes for the items you would like to print (e.g., Fitting reports, Getting Started Guides for hearing instruments and accessories, if applicable). The client's language for the Getting Started Guides can be selected. Click the Send Email or Print buttons to provide materials to your patient.
2. Click the Save button. Select the check boxes for the items that you would like to save (e.g., Save to hearing instruments, Save to database, Save to accessories) on the save dialog pop-up window. Click Save and then Close in the save confirmation window.

Note: Clicking the Save icon on the primary tool bar or accessing the Save function in the main menu also provides the ability to save to the hearing instruments, database, and accessories.

3. To close the session, click the Close Session button. If you have not yet saved the fitting, the save dialog pop-up window will appear. When running Unitron TrueFit under NOAH click the Exit Unitron TrueFit button.
4. After closing the session:
 - If using iCube II/iCube, restart your hearing instrument(s) by opening and closing the battery door(s).
 - If using NOAHlink or HI-PRO, remove the programming cable, insert the batteries and close the battery door.

Patient insights menu



Observe either clients' usage patterns, Lifestyle or Patient Ratings in this menu. At the initial fitting, no usage (also known as data logging) or Lifestyle information (also known as Log It All) will be available. Log It All and Patient Ratings are only available for North platform products and Lifestyle and Patient Ratings are available for Tempus platform products.

Overview

The overview screen provides an at a glance view of the patients usage, lifestyle and experience with their hearing instruments.

Usage (Data logging)

Bar chart

The bar chart located in the centre of the screen shows the % of time spent in automatic and manual programs. For products without an automatic program, the bar chart will show the % of time spent within each manual program. Data is averaged across left and right hearing instruments to simplify the information in the table. Ear specific data logging can be found in the table located immediately below the bar chart.

Table

This table provides information related to average usage and volume control adjustments across all programs. When activated, this table will also provide information related to tinnitus masker adjustments.

In the case of logged data, you can selectively apply logged data to the automatic program, manual programs, or the wireless programs with the exception of tinnitus masker. Adjustments to the tinnitus masker can only be made manually under Configure Features.

Note: Products with self learning will have a remove button.

History

You have the option of viewing data logging history from previous sessions. To do so, select the desired session within the drop box provided.

Patient Ratings icon

The Patient Ratings icon, which looks like a speech bubble, will appear beside any environment or program having Patient Ratings associated with it. You may click on these to view the ratings.

Lifestyle (Log It All)

The Log It All feature allows clinician to view the patients listening environments across all 7 environments regardless of the technology level of the hearing instrument worn.

Log It All bar chart

The bar chart is generated based on the percentage of time the patient spent in each type of listening environment. Coloured sections of the graph indicate their availability for the technology level selected.

Technology Level

Clicking a higher technology will update the bar chart and coverage to include the additional environments and hearing instrument features available to the selected technology level.

Patient Ratings icon

The Patient Ratings icon, which looks like a speech bubble, will appear beside any environment or program that has patient ratings associated with it. You may click on these to view the ratings.

Patient Ratings

The Patient Ratings feature allows clinicians to view the ratings and comments patients made using the remote control apps. The clinician can view these ratings even if the patient is not in the clinic by opening the last patient session and navigating to this screen.

Timeline View

The timeline view displays an overview of the positive and negative moment ratings of the patient over time. Clicking on a date will open the ratings for that date. Clicking on a specific rating will display that rating on the patient screen if that option is selected on the Quick View Pane; clicking on that same rating will toggle off the view of that rating on the patient screen.

Moment Ratings

The moment ratings view displays the same patient ratings grouped according to the situation selected by the patient for each rating. Clicking on one of the patient situations will open the ratings related to that situation. Clicking on a specific rating will display that rating on the patient screen if that option is selected on the Quick View Pane; clicking on that same rating will toggle off the view of that rating on the patient screen.

Each moment rating has up to 9 pieces of information related to it:

- Moment rating: positive / negative
- Date and time of the moment
- Patient-selected situation
- Comment
- Hearing instrument program
- Log It All environment
- Volume settings
- Mic attenuation settings
- AAM settings

Note: The Patient Ratings feature requires an internet connection.

Curve display options

All of the curves displayed from Unitron TrueFit v3.1 going forward are based on targets that are generated assuming a speech input instead of the pure tone inputs previously used. The values displayed for the curves on the version 3.1 screens will look different than values displayed in earlier versions of Unitron TrueFit for the same fitting. However, the actual output of the hearing instruments will remain unchanged. This is just a change to the way the curves are displayed, not to the actual gain values used by the hearing instruments.

On any screen displaying a graph, you can change the items shown by clicking the curve display icon above the upper right graph. Adjustments made here are applied to both the left and right graphs.

Depending on the section of the software, you will have the option of choosing:

- Gain: insertion gain, real-ear, 2cc or ear simulator. Also, option of showing feedback threshold obtained during the feedback test.
- Output: HL real-ear, SPL real-ear, SPL 2cc or SPL ear simulator. Also, option of showing HTL (hearing threshold) and UCL (uncomfortable loudness) data.
- Input / Output: SPL real ear, SPL 2cc or SPL ear simulator, each available at .5, 1, 2, 4, 6, 8 kHz
- Audiogram: displays current audiogram used in software
- Show target: displays the target curve for the current view
- Show calculated response: displays the original quick fitted hearing instrument response for the current view
- Verification graph: (available in Pre-Fitting screen only if selected under Options > Preferences > Fitting Session > Fitting) displays hearing instrument response and target curves based on speech inputs at 50 / 65 / 80 dB SPL. You have the option of showing curves in gain (insertion gain; 2cc coupler) or output (SPL real-ear)

Note: When the mouse cursor is positioned over items on the graph, a legend appears providing further details related to that item.

Main Menu

The main menu is available at the top of each screen and consists of these options:

File

Import Client: (standalone only): imports previously exported Unitron TrueFit client data. After selecting this option, you must select the source file location from the provided window.

Export Client: exports Unitron TrueFit client data from the software. After selecting this option, you must choose the destination and name of the exported file.

Export options include:

- **Export all clients:** exports all client files from the Unitron TrueFit database
- **Export anonymously:** removes client name from the exported file and assigns an 'anonymous' file name identifier.
- **Export to NOAH:** exports client file in a format that can be imported into NOAH.

Print: opens a window that shows the documents available such as the Fitting Reports and the Getting Started Guides (hearing instruments and accessories, if applicable). The client's language for the Getting Started Guides can be selected. The selected documents can be previewed, printed or saved from this window.

Send Email: opens a window that shows information that can be sent to the client.

Software Updates: opens the Welcome Screen to the Software Updates tab.

Go to FLEX:TRACKER: opens a browser to the correct page for your account. (This menu item will not be displayed if you have not enabled FLEX:TRACKER in preferences.)

Save: saves the current fitting information. Choose from Save to hearing instrument, Save to database, or Save to accessories (if accessory added to fitting).

Close Session: exits the current open session. You will be prompted to save if you haven't done so already.

Close Unitron TrueFit: exits the software application. You will be prompted to save your fitting information if you have not done so before closing Unitron TrueFit.

Forms

Repair Form: follow the on screen instructions to complete a repair form.

Remake Form: follow the on screen instructions to complete a remake form.

Loss and Damage Form: follow the on screen instructions to complete a loss and damage form.

Online Order Forms: opens a browser to the correct page on the Unitron website so you can print out an order form.

Online Repair Forms: opens a browser to the correct page on the Unitron website so you can print out a repair or remake form.

Hearing Instrument

Save: saves the current fitting information. Choose from Save to hearing instrument, Save to database, or Save to accessories (if accessory added to fitting).

Test Mode: sets the hearing instrument into a test mode so you can compare the electroacoustic performance of the device to the published ANSI / IEC specification data sheets.

Verification Mode: Sets the hearing instrument into a verification mode to allow testing without the interference of adaptive features. There are 3 options:

- Adaptive features active: default state.
- Real Ear Verification: all adaptive features are disabled except for Natural Sound Balance and input selection.
- 2cc Coupler Verification: all adaptive features and input selection are disabled.

HI Update: checks if newer functionality is available for the connected hearing instrument. If an update is available, the instrument maintains its fine tuning and new features become enabled.

Note: Quantum Pro and Moxi Pro devices cannot be updated using iCube. Only NOAHlink and HI-PRO can be used.

HI Repair / Reset: opens a wizard to reset the firmware of a hearing instrument. Only use this when directed by an error message. If this was not successful, please try again before sending the hearing instrument back to your distributor. The client record stored in the database will not be affected.

Transfer Fitting: provides instructions on how to transfer a fitting to or from another hearing instrument.

Delete Bluetooth pairing: Deletes all Bluetooth pairings with phones or TV Connector on the hearing instruments.

Options

Preferences

Generates the user preferences dialog box with the following options:

General

- Language and Region: select the preferred language for text and sound files. Driving orientation can be selected for your country.
- Presentation: select your preferred level of animations.
- myUnitron: Register myUnitron account and enter myUnitron user name and password. Required in order to use patient ratings.
- Support: generate Unitron TrueFit logging information for support.
- FLEX: enter code here to enable FLEX:UPGRADE functionality. Choose the appropriate trial period defaults for FLEX:TRIAL and FLEX:UPGRADE.

- Patient Ratings: here you can enable or disable the Patient Ratings feature.
- Email templates: create your own email template when sending support information to client.
- Welcome Screen: select to hide / show the Welcome Screen on startup, select to always show expanded.

Fitting Session

- Diagnostics: choose the preferred bone conduction symbol and view/adjust the DSL v5 ABR nHL to eHL correction values.
- Fitting: indicate if the speech verification graph option will be available from the curve display options on the Pre Fitting screen. Under tuning, selecting the check box will display TK for soft speech on tuning screen. Choose whether to enable password protection to keep fitting information confidential. Following activation of this option, you can insert their desired password into the software. If the Unitron TrueFit software version you are using does not have the same password as the one saved to the hearing instrument, you will be required to enter the correct code to proceed with the fitting. Note: Password protection prevents reading of information from a hearing instrument but does not prevent a clinician from creating a new fitting on that same device. Certain features can be activated using a feature activation key.
- Presentation: select the preferred tuning values display (absolute or relative); select visibility options for CR values; hide or show preparation instructions for the feedback wizard and the in situ test wizard; select whether or not the pediatric fitting mode recommendation pop-up box is displayed; and choose whether or not to maintain the aspect ratio of graphs.
- Pediatric Modes: View and / or edit the fitting mode defaults for various pediatric age ranges using the provided tables. Modify aspects related to fitting formula, global parameters, hearing instrument options, program settings, and program options.
- Standard Mode: View and / or edit the fitting mode defaults for standard mode (adults) using the provided tables. Modify aspects related to fitting formula, global parameters, hearing instrument options, program settings, and program options.

Reports

- Forms: enter clinic information.
- Graphs: select the preferred graph type: Output or Gain for the Fitting Report. For the Output graph type, choose from: HL, SPL Real Ear, SPL 2cc, SPL Ear Simulator. For the Gain graph type, choose from: 2cc, Ear Simulator, Real Ear, Insertion Gain.

Fitting Device

- Communication: fitting device management selects whether the fitting device is accessible by other programs while using Unitron TrueFit.
- NOAHlink: enable/disable the NOAHlink, perform a system check, configure properties, or start the pairing wizard.

- HI-PRO: enable/disable the HI-PRO, perform a system check or configure.
- iCube: enable/disable the iCube / iCube II, perform a system check via USB or wireless connection, upgrade firmware, or start the pairing wizard.
- Noahlink Wireless: enable/disable the Noahlink Wireless, check connection.

Sound System

- Sound Output: select either stereo speaker or Aurical.
- Calibration: calibrate to ensure media player sound files are presented at the correct level. Manual calibration uses a sound level meter. Play the calibration noise and adjust the Unitron TrueFit volume slider and/or Windows volume slider until you measure 80 dB (A) at the listening position (where the client will sit). For Automatic calibration start the calibration wizard. This process uses the hearing instrument to measure and adjust the sound level.

iCube/iCube II Configuration: opens the iCube configuration section in Preferences. The screen provides ability to enable/disable the iCube / iCube II, perform a system check via USB or wireless connection, upgrade firmware or start the pairing wizard (i.e., add an iCube).

Accessory Firmware Update: opens a dialog box used to update accessories. The accessory must be connected to the computer using an USB cable. After detecting the device, Unitron TrueFit will offer available firmware updates.

Change uDirect 2 Language Pack: Opens up a wizard that will help you select a language for the speech notifications.

Help

Help & Support: links to the support section of Unitron website. Internet connection is required. Support materials include items such as video tutorials, guides, troubleshooting tips, specification sheets, FAQs, glossary, cable/programming information and styles and colours.

Instruction Guide: direct link to this manual.

Training Session: is used to demonstrate the full functionality of each screen as if hearing aids were actually being programmed. It is useful for a better demonstration of such features as the feedback optimization test and Lifestyle (Log It All) data.

- Selecting Training Session from the Help menu generates a dialog box where several training scenarios can be selected. This includes a free-flow scenario and a list of sample training scenarios with pre-defined data. Selecting a training scenario may prompt you to save your current fitting session.
- For a new patient, the preferred hearing instrument technology level and style must be chosen on the Selection screen to populate the fitting session. For sample patients, the fitting session will be populated and ready to use. It is not necessary to Detect the instruments to generate Data logging information, however, detection is necessary to access other things such as

the Feedback Optimization test. The fitting session proceeds from there as if the chosen instruments were actually connected to Unitron TrueFit.

- The Training Session cannot be saved.

Contact Us: links to the Unitron Contact Us web page.

Unitron Website: links to the Unitron website.

Support

- **Generate Support Package:** produces a .zip file with relevant support information that can be sent to the Unitron Software Support team, for troubleshooting purposes.
- **Homologation Settings:** sets the hearing instrument into a test mode used for certification of product parameters.
- **Export Client for Support:** exports client data from the software for support/troubleshooting purposes.
- **Register with NOAH:** register Unitron TrueFit with NOAH so that it will show up as a module within NOAH
- **Unregister from NOAH:** unregister Unitron TrueFit from NOAH so that it will no longer show up as a module within NOAH
- **Remote Support:** opens a direct link to Log Me In.
- **Delete Patient Ratings for this patient:** opens a window allowing you to confirm that you want to remove access to Patient Ratings for this patient, which will delete their activation code and delete all of their ratings.

About DSL v5: generates a dialog box displaying notices related to the DSL v5 formula.

About Unitron TrueFit: generates a dialog box displaying the software version and copyright notices.

For more information about fitting Unitron hearing instruments or about Unitron TrueFit fitting software, visit the Help feature within Unitron TrueFit or visit unitron.com