

**unifit**<sup>TM</sup>  
v 5.50

**Practical  
Fitting  
Solutions**

**unitron**  
*hearing* <sup>TM</sup>

# WHAT IS NEW IN UNIFIT v5.50?

## Liaison™

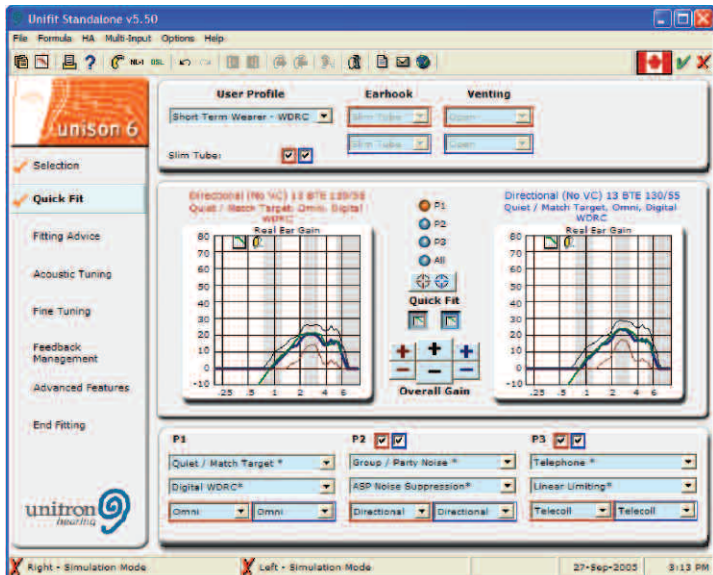
- ▶ Liaison™ custom products now available with Easy t-coil.

## Conversa.NT™

- ▶ The Conversa.NT™ product family, including Moda, now has the new AutoMic as a standard feature. AutoMic switches automatically within one program between omni and fixed directional patterns in response to the sound levels in the listening environment.
- ▶ Conversa.NT 13 NoVC BTE is now available with slim tube open fittings in addition to standard earmold fittings.

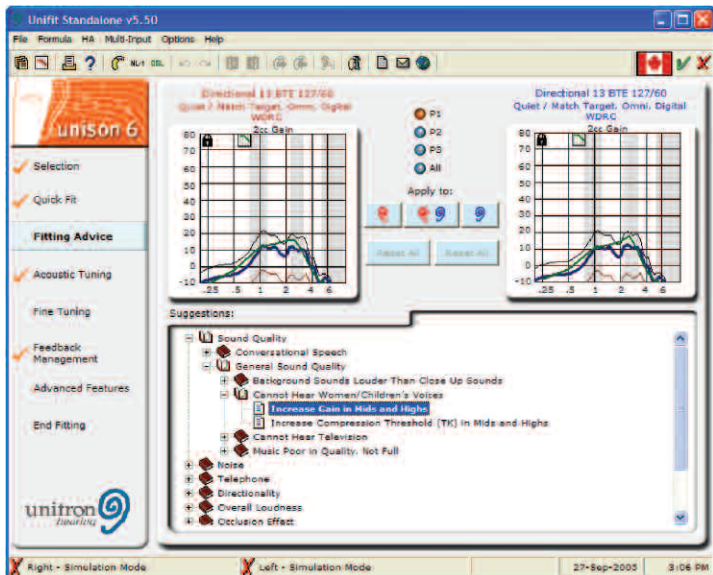
## Unison™

- ▶ Unison™ 6 and Unison 3 now offer Moda 10A BTE and 13 NoVC styles with a choice of slim tube open or standard earmold fittings.
- ▶ Intelligent noise reduction has been added to Unison 6, which in conjunction with the different processing strategies, improves first fit acceptance.
- ▶ Unison 6 and 3 include start-up mute which improves comfort for patients when they are inserting their hearing aids.
- ▶ High Frequency Hearing Loss rationale has been added to Unison 6, 3, and Essential.
- ▶ Unison 6 now has directional roll off control.
- ▶ Unison 3 features an adaptive feedback canceller to improve comfort.
- ▶ Unison Essential now offers a multiband feedback manager to eliminate fit-related feedback.



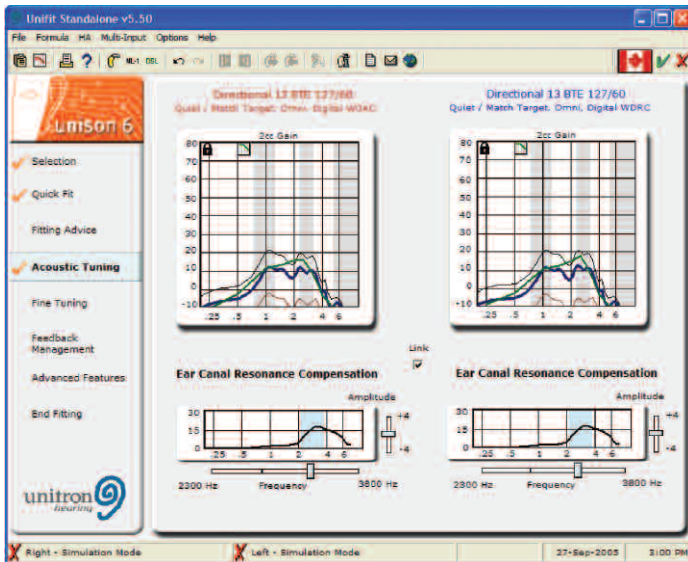
## Quick Fit

Unifit will automatically Quick Fit a new fitting to provide the best performance. Select Slim Tube for open fittings and the High Frequency Hearing Loss correction (HFHL) will be automatically applied. Select the Quick Fit “bullseye”. Adjustments to the Adaptation Manager results in an automatic update to the hearing aid settings according to the wearer’s experience level.



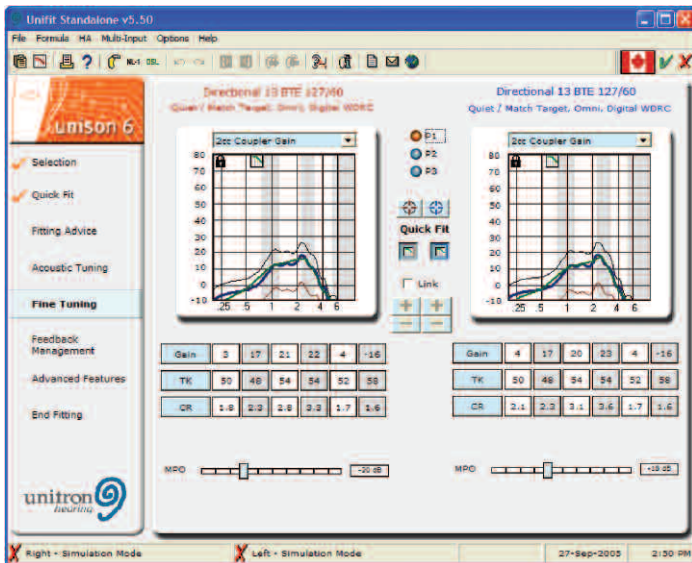
## Fitting Advice

Fitting Advice is an observation-driven method of making fine tuning adjustments to Unitron Hearing digital hearing instruments. Adjustments can be made individually in each ear or simultaneously in both ears. Client observations listed in the Fitting Advice are grouped into categories covering topics such as sound quality, noise, and overall loudness.



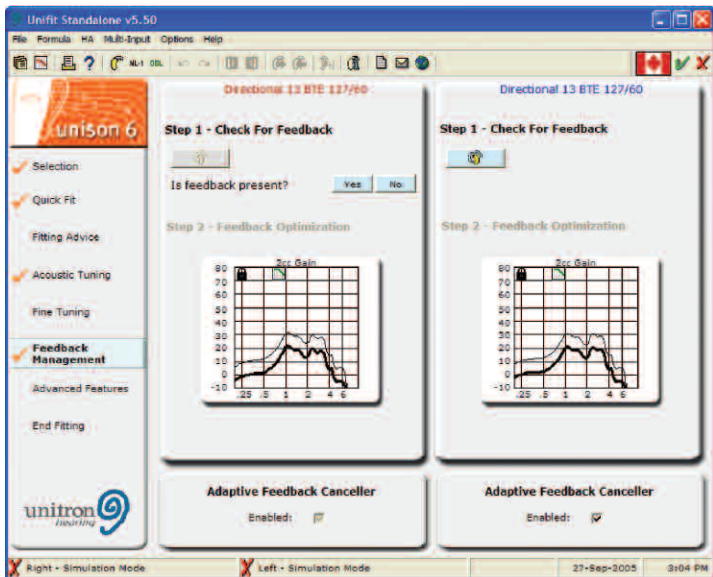
## Acoustic Tuning

Use the Ear Canal Resonance Compensation tool to customize the peak frequency and peak amplitude of the hearing aids for optimal sound quality. Use the Occlusion Manager to minimize the occlusion effect.



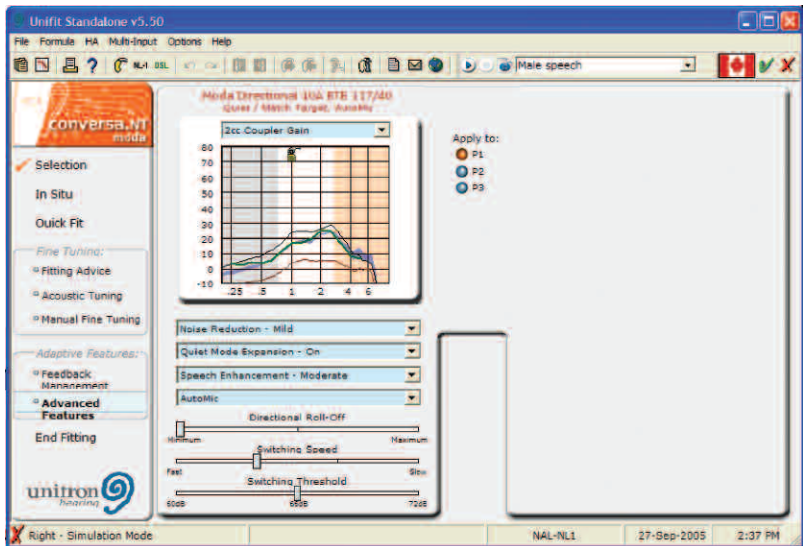
## Fine Tuning

The Fine Tuning screen allows adjustment of the characteristics for various input levels and frequency regions. The link option allows changes to be applied binaurally. Different product families have different levels of fine tuning. Select different views using the dropdown list for Gain, Output, Audiogram and Input-Output.



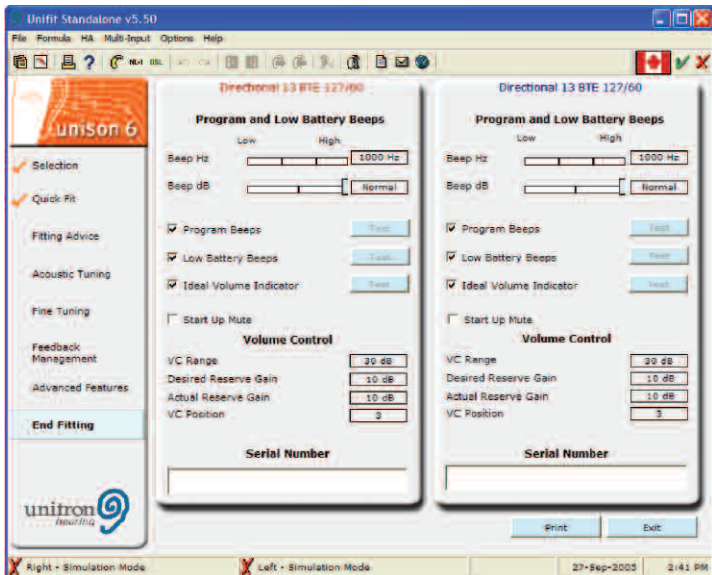
## Feedback Management

The first step is to determine whether fit-related feedback is present. If feedback is not present, Unifit will re-enable the feedback management system, if applicable. If feedback is present, Unifit will then activate feedback optimization to eliminate the feedback. Once feedback optimization is complete, review the test results and decide whether or not to accept the results or re-run the test.



## Advanced Features

Adjustments to Noise Reduction, Quiet Mode Expansion, Speech Enhancement and AutoMic can be made from the Advanced Features screen. For directional hearing instruments, the Directional Roll-Off can be adjusted here as well.



## End Fitting

The End Fitting screen is the final stage of the fitting process. End fitting allows you to test and change beep levels, as well as enable/disable Program Beeps, Low Battery Beeps, the Ideal Volume Indicator, Wind noise manager (if applicable) and Start Up Mute.

## Minimum System Requirements

In order to run Unifit, minimum system requirements include:

- Windows XP Professional, Windows 2000 (SP2 or higher), Windows ME or Windows 98 (SE)
- Pentium III 1G with 256-MB system RAM
- Super VGA Monitor and video card capable of a screen resolution of 800 x 600 with 16 bit color
- 1G free hard drive space
- CD-ROM
- Adobe Acrobat Reader 6.0 or newer

## Recommended System Requirements

The following are recommended system requirements:

- Windows XP Professional is preferred
- Pentium IV, 2G or greater with 512-MB system RAM
- Screen resolution of 1024 x 768 with 16 bit color
- 1G free hard drive space
- CD-ROM
- Adobe Acrobat Reader 7.0

## Installing Unifit for Noah 2.0

- Select Install Module under Setup on the NOAH menu.
- Insert the Unifit CD into the CD-ROM.
- Enter the drive letter for your CD-ROM player.
- Follow the instructions on the screen.

## Installing Unifit for Noah 3.0

- Select Tools/Setup/Install Module on the NOAH menu.
- Insert the Unifit CD into the CD-ROM.
- Enter the drive letter for your CD-ROM player.
- Follow the instructions on the screen.

## Installing Standalone Unifit

- Insert the Unifit CD into the CD-ROM.
- Go to the Windows Start button, choose Run, and enter the file information. (i.e.: d:\unisa.EXE where d: represents the letter of your CD drive.)
- Follow the instructions on the screen.

## Bluetooth and NOAHlink

Installation and setup instructions can be found under Support Materials on the Unifit toolbar. Additional information is available from HIMSA at <http://www.himsa.com>.



## **Need assistance?**

International - +1 519 895 0100

Europe & Germany - +49 711 658538 0

Canada - 1 800 265 8255

U.S. - 1 800 888 8882

U.K. - 01925 247810

France - 026 23 22 00

Netherlands- 030 604 9325

China - 512 6258 2258

New Zealand - 0800 864 8766

Australia - 1800 212 515

[www.unitronhearing.com](http://www.unitronhearing.com)